



- HORIZONTAL RAIN, flow rate max. 1.6 gpm (at 3 bar)
- Function from: gpm
- Descaling system

Technical data:

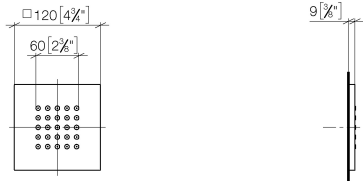
- Cover plate 4-3/4" x 4-3/4"
- 1/2" connection

Notes:

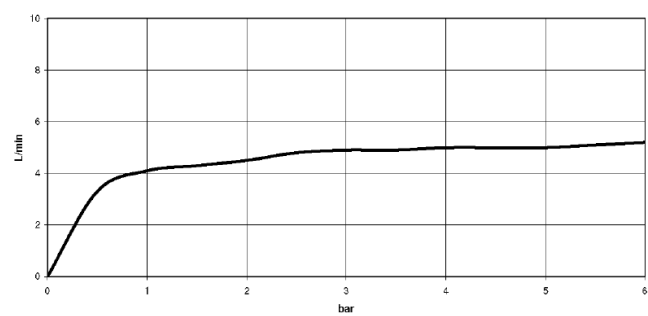
- This product can help a building meet the requirements of Green Building Rating Systems, e.g. LEED®, BREEAM®, DGNB

Additional flow restrictor (2.2 gpm) included to extend spray projection.

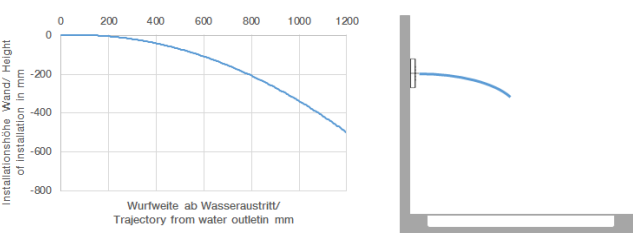
	Brushed Dark Brass	36 515 979-39
	Chrome	36 515 979-00
	Brushed Platinum	36 515 979-06
	Platinum	36 515 979-08
	Dark Chrome	36 515 979-19
	Light gold	36 515 979-26
	Brushed Light Gold	36 515 979-27
	Brushed Durabrass (23kt Gold)	36 515 979-28
	Matte Black	36 515 979-33
	Brushed Bronze	36 515 979-42
	Brushed Champagne (22kt Gold)	36 515 979-46
	Champagne (22kt Gold)	36 515 979-47
	Brushed Chrome	36 515 979-93
	Brushed Dark Platinum	36 515 979-99



Flow rate chart



Trajectory length diagram



Codes & Standards

California Energy Commission (CEC)	DIN 4109	ISO 3822	Ü-Zeichen
------------------------------------	----------	----------	-----------



WATER POINTS Body spray FlowReduce - Brushed Dark Brass

SERIES-VARIOUS

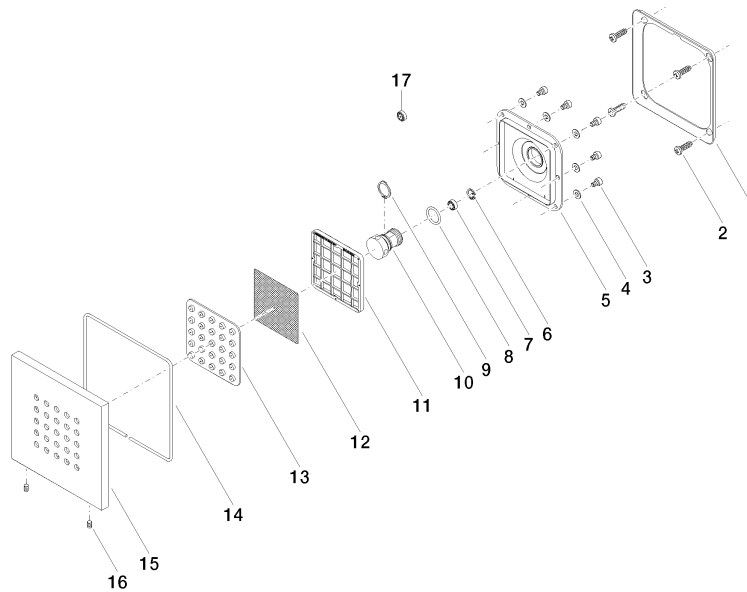
36 515 979 Product version from 4/1/2024

Certificates and sustainability

LGA_18

36 515 979 Product version from 4/1/2024

Parts for other
finishes can be found
here: [Chrome](#)



Spare parts list

Number	Item Number	Designation	Number of units	Lead time
10	09 17 11 146 90	distributor	1.00	60
2	09 30 31 022 90	screw	4.00	2
17	09 23 01 052 90	flow reducer	1.00	2
4	09 30 11 024 90	disc	8.00	2
15	09 27 98 004-39	rosette	1.00	60
12	09 29 30 043 90	insert	1.00	2
14	09 14 03 117 90	seal	1.00	2
7	90 23 01 032 00 90	flow reducer	1.00	2
1	09 28 01 024 90	holder	1.00	2
5	09 12 12 205 90	base	1.00	2
11	09 17 97 057 90	holder	1.00	2
3	09 30 30 031 90	screw	8.00	2
6	09 16 01 016 90	ring	1.00	2
16	09 31 11 048 90	pin	1.00	2
8	09 14 10 130 90	seal	1.00	2
9	09 16 01 017 90	ring	1.00	2
13	09 12 01 075 90	insert	1.00	2