



MADISON Volume Control clockwise-closing 1/2" - Platinum







MADISON

36 607 361



- Flange diameter 2-1/8"
- Ceramic disc cartridge
- Includes 3x porcelain inserts: HOT, COLD and BLANK (ADA)

(ADA)

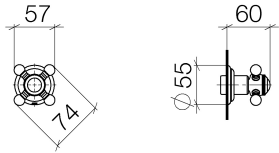
	Platinum	36 607 361-08
	Chrome	36 607 361-00
	Brushed Platinum	36 607 361-06
	Durabrass (23kt Gold)	36 607 361-09
	Brushed Durabrass (23kt Gold)	36 607 361-28
	Brushed Dark Platinum	36 607 361-99

Required article



- Rough for volume control 1/2" -**
- Max. rough in depth 5-3/4"
  - Min. rough in depth 3"
- 35 607 970-90  
0010

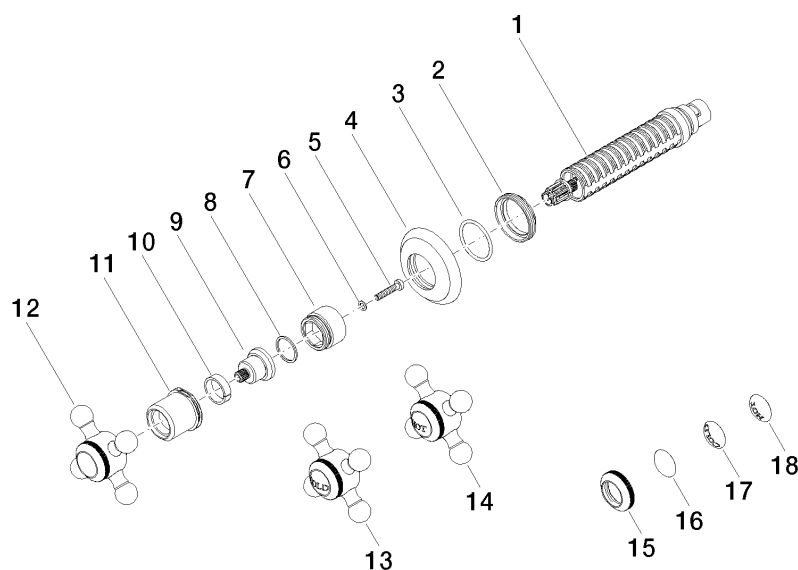
36 607 361



Codes & Standards			
ADA	ASME A112.18.1	cUPC	DIN 4109
EN 1111	EN 200	ISO 3822	Scottish Water Byelaws
UK Water Supply Regulations	Ü-Zeichen		

Certificates and sustainability				
DVGW_DW-6501DN0	WRAS_2011	LGA_29	WRAS_2010	DVGW_DW-6512DN0
LGA_29	IAPMO_4976 (			

36 607 361



## Spare parts list

Number	Item Number	Designation	Number of units	Lead time
9	09 12 12 064-08	base	1.00	60
15	09 20 36 005-08	handle	1.00	40
12	04 20 36 100 02-08	handle	1.00	40
4	09 27 36 102-08	rosette	1.00	40
16	09 26 01 016 90	accessories	1.00	2
13	04 20 36 100 00-08	handle ( cold )	1.00	40
1	90 90 03 143 00 90	top	1.00	2
6	09 30 11 194 90	disc	1.00	2
18	09 26 01 011 90	accessories	1.00	2
14	04 20 36 100 01-08	handle ( hot )	1.00	40
7	09 18 30 007-08	sleeve	1.00	60
11	09 21 02 161-08	cover	1.00	40
2	09 23 10 125-00	nut	1.00	10
17	09 26 01 010 90	accessories	1.00	2
3	90 14 10 063 00 90	seal	1.00	2
8	90 28 10 030 00 90	ring	1.00	2
10	90 14 15 021 00 90	ring	1.00	2
5	90 30 30 075 00 90	screw	1.00	2