



Volume Control counter-clockwise closing hot 1/2" - Brushed Dark Platinum

SERIES SPECIFIC

36 607 742 Product version from 7/1/2023



- Without flange
- Handle Ø 2-3/8"
- with marking for hot
- Ceramic disc cartridge

	Brushed Dark Platinum	36 607 742-99
	Chrome	36 607 742-00
	Brushed Platinum	36 607 742-06
	Dark Chrome	36 607 742-19
	Brushed Durabronze (23kt Gold)	36 607 742-28
	Matte Black	36 607 742-33
	Brushed Champagne (22kt Gold)	36 607 742-46
	Champagne (22kt Gold)	36 607 742-47

Required article



- Rough for volume control 1/2" -** 35 607 970-90
- Max. rough in depth 5-3/4" 0010
 - Min. rough in depth 3-3/8"

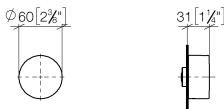


Volume Control counter-clockwise closing hot 1/2" - Brushed Dark Platinum

SERIES SPECIFIC

36 607 742 Product version from 7/1/2023

mm [inches]

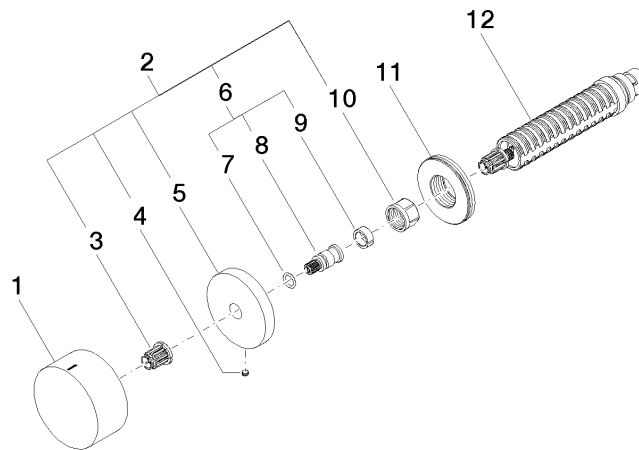


Codes & Standards

ASME A112.18.1	cUPC	DIN 4109	EN 200
ISO 3822	Scottish Water Byelaws	UK Water Supply Regulations	Ü-Zeichen

Certificates and sustainability

DVGW_DW-6501DN0	LGA_38	LGA_29	WRAS_2010	LGA_29
IAPMO_4976 (



Spare parts list

Number	Item Number	Designation	Number of units	Lead time
12	90 90 03 142 00 90	top	1.00	2
3	90 12 12 002 00 90	fixing cap	1.00	2
8	09 29 06 020-99	spindle	1.00	-
Spare part can no longer be ordered, please order the replacement item				
11	09 30 01 107 90	sleeve	1.00	2
4	09 31 11 055 90	pin	1.00	2
5	09 27 74 004-99	rosette	1.00	20
1	09 20 74 021-99	handle (hot)	1.00	20
6	04 29 06 020 00-00	spindle	1.00	10
2	04 27 74 004 00-99	rosette	1.00	20
7	90 14 10 060 00 90	seal	1.00	2
9	90 14 15 020 03 90	ring	1.00	2
10	90 23 30 023 00 90	nut	1.00	2