

TARA Volume Control clockwise-closing 1/2" - Champagne (22kt Gold)



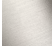




TARA

36 607 892 Product version from 10/27/2020



- Flange diameter 2-1/8"
- Ceramic disc cartridge
(ADA)

(ADA)

	Champagne (22kt Gold)	36 607 892-47
	Chrome	36 607 892-00
	Brushed Platinum	36 607 892-06
	Platinum	36 607 892-08
	Dark Chrome	36 607 892-19
	Brushed Durabronze (23kt Gold)	36 607 892-28
	Matte Black	36 607 892-33
	Brushed Dark Brass	36 607 892-39
	Brushed Bronze	36 607 892-42
	Brushed Champagne (22kt Gold)	36 607 892-46
	Brushed Chrome	36 607 892-93
	Brushed Dark Platinum	36 607 892-99

Required article



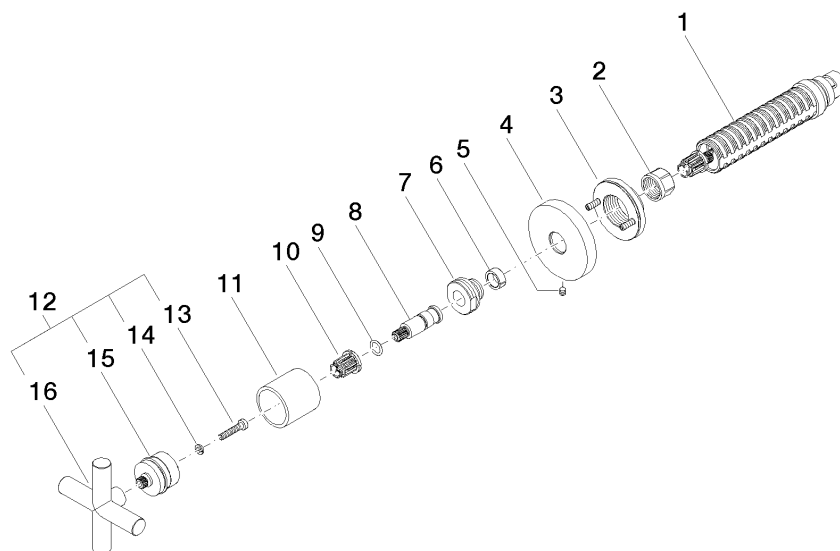
- Rough for volume control 1/2" -** 35 607 970-90
 •Max. rough in depth 5-3/4" 0010
 •Min. rough in depth 3-3/8"

mm [inches]



Codes & Standards			
ADA	DIN 4109	EN 1111	EN 200
ISO 3822	Scottish Water Byelaws	UK Water Supply Regulations	Ü-Zeichen

Certificates and sustainability				
DVGW_DW-6501DN0	WRAS_2011	LGA_29	WRAS_2010	DVGW_DW-6512DN0



Spare parts list

Number	Item Number	Designation	Number of units	Lead time
1	90 90 03 143 00 90	top	1.00	2
11	09 21 02 144-47	sleeve	1.00	30
4	09 27 89 108-47	rosette	1.00	30
7	09 24 05 002 90	nipple	1.00	2
8	09 29 06 022 90	spindle	1.00	2
16	09 20 89 010-47	handle	1.00	60
3	90 21 02 108 00 90	disc	1.00	2
15	90 12 12 007 00-47	base	1.00	30
10	90 12 12 002 00 90	fixing cap	1.00	2
14	90 30 11 029 00 90	disc	1.00	2
13	90 30 30 075 00 90	screw	1.00	2
12	90 20 89 010 10-47	handle	1.00	30
2	90 23 30 023 00 90	nut	1.00	2
9	90 14 10 060 00 90	seal	1.00	2
6	90 14 15 020 03 90	ring	1.00	2
5	90 31 11 007 00 90	pin	1.00	2