



SYMETRICS Volume Control counter-clockwise closing 1/2" - Brushed Platinum

SYMETRICS

36 607 985 Product version from 6/1/2024



- Flange 2-3/8" x 2-3/8"
- Ceramic disc cartridge (ADA)
- (ADA)

	Brushed Platinum	36 607 985-06
	Chrome	36 607 985-00
	Platinum	36 607 985-08
	Dark Chrome	36 607 985-19
	Brushed Light Gold	36 607 985-27
	Brushed Durabrass (23kt Gold)	36 607 985-28
	Brushed Chrome	36 607 985-93
	Brushed Dark Platinum	36 607 985-99

Required article



- Rough for volume control 1/2" -**
- Max. rough in depth 5-3/4"
 - Min. rough in depth 3"
- 35 607 970-90 0010

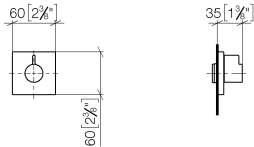


SYMETRICS Volume Control counter-clockwise closing 1/2" - Brushed Platinum

SYMETRICS

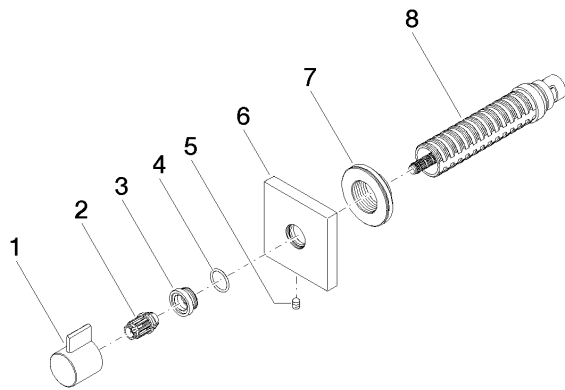
36 607 985 Product version from 6/1/2024

mm [inches]



Codes & Standards			
ADA	ASME A112.18.1	cUPC	DIN 4109
EN 1111	EN 200	ISO 3822	Scottish Water Byelaws
UK Water Supply Regulations	Ü-Zeichen		

Certificates and sustainability				
DVGW_DW-6501DN0	WRAS_2011	LGA_29	WRAS_2010	DVGW_DW-6512DN0
LGA_29	IAPMO_4976 (



Spare parts list

Number	Item Number	Designation	Number of units	Lead time
1	09 20 98 002-06	handle	1.00	10
2	09 12 12 005 90	fixing cap	1.00	2
3	09 12 12 043-06	base	1.00	10
4	09 14 10 017 90	seal	1.00	2
8	90 90 03 202 00 90	top	1.00	2
6	09 27 98 014-06	rosette	1.00	10
7	09 21 02 151 90	sleeve	1.00	2
5	90 31 11 004 00 90	pin	1.00	2