

MADISON Volume Control clockwise-closing 3/4" - Chrome



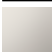



MADISON

36 608 361



- Flange diameter 2-1/8"
- Ceramic disc cartridge
- Includes 3x porcelain inserts: HOT, COLD and BLANK (ADA)

(ADA)

	Chrome	36 608 361-00
	Brushed Platinum	36 608 361-06
	Platinum	36 608 361-08
	Durabrass (23kt Gold)	36 608 361-09
	Brushed Durabrass (23kt Gold)	36 608 361-28
	Brushed Dark Platinum	36 608 361-99

Required article



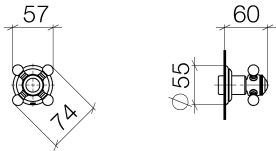
- Rough for volume control 3/4" -**
- Max. rough in depth 5-3/4"
 - Min. rough in depth 3"
- 35 608 970-90
0010



MADISON Volume Control clockwise-closing 3/4" - Chrome

MADISON

36 608 361



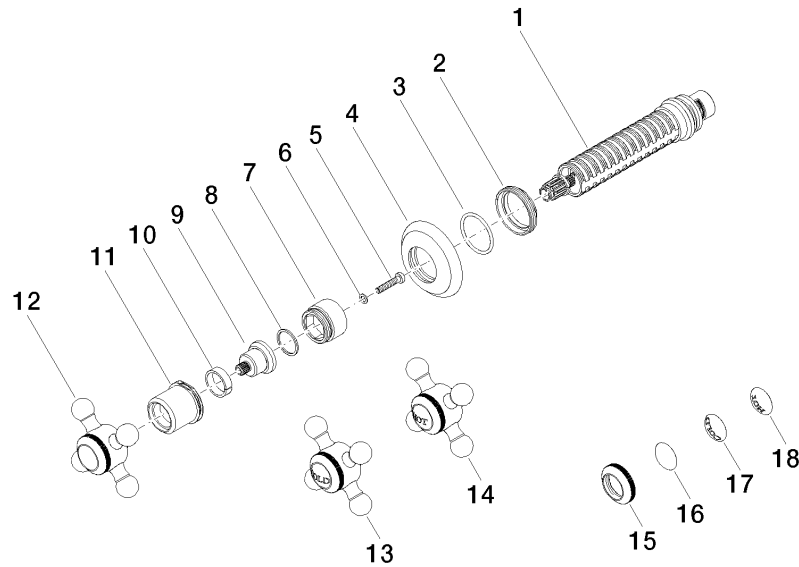
Codes & Standards

ADA	ASME A112.18.1	cUPC	Scottish Water Byelaws
UK Water Supply Regulations			

Certificates and sustainability

WRAS_2010	IAPMO_4976 (
-----------	--------------

36 608 361



Spare parts list

Number	Item Number	Designation	Number of units	Lead time
11	09 21 02 161-00	cover	1.00	10
7	09 18 30 007-00	sleeve	1.00	10
18	09 26 01 011 90	accessories	1.00	2
16	09 26 01 016 90	accessories	1.00	2
1	90 90 03 127 00 90	top	1.00	2
2	09 23 10 125-00	nut	1.00	10
9	09 12 12 064-00	base	1.00	10
15	09 20 36 005-00	handle	1.00	10
4	09 27 36 102-00	rosette	1.00	10
6	09 30 11 194 90	disc	1.00	2
13	04 20 36 100 00-00	handle (cold)	1.00	10
17	09 26 01 010 90	accessories	1.00	2
12	04 20 36 100 02-00	handle	1.00	10
14	04 20 36 100 01-00	handle (hot)	1.00	10
3	90 14 10 063 00 90	seal	1.00	2
10	90 14 15 021 00 90	ring	1.00	2
5	90 30 30 075 00 90	screw	1.00	2
8	90 28 10 030 00 90	ring	1.00	2