



MADISON Volume Control clockwise-closing 3/4" - Platinum







MADISON

36 608 361



- Flange diameter 2-1/8"
- Ceramic disc cartridge
- Includes 3x porcelain inserts: HOT, COLD and BLANK (ADA)

(ADA)

|   |                               |               |
|---|-------------------------------|---------------|
|  | Platinum                      | 36 608 361-08 |
|  | Chrome                        | 36 608 361-00 |
|  | Brushed Platinum              | 36 608 361-06 |
|  | Durabrass (23kt Gold)         | 36 608 361-09 |
|  | Brushed Durabrass (23kt Gold) | 36 608 361-28 |
|  | Brushed Dark Platinum         | 36 608 361-99 |

Required article



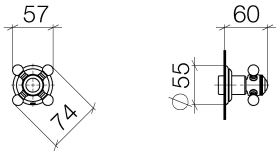
- Rough for volume control 3/4" -**
- Max. rough in depth 5-3/4"
  - Min. rough in depth 3"
- 35 608 970-90  
0010



MADISON Volume Control clockwise-closing 3/4" - Platinum

MADISON

36 608 361



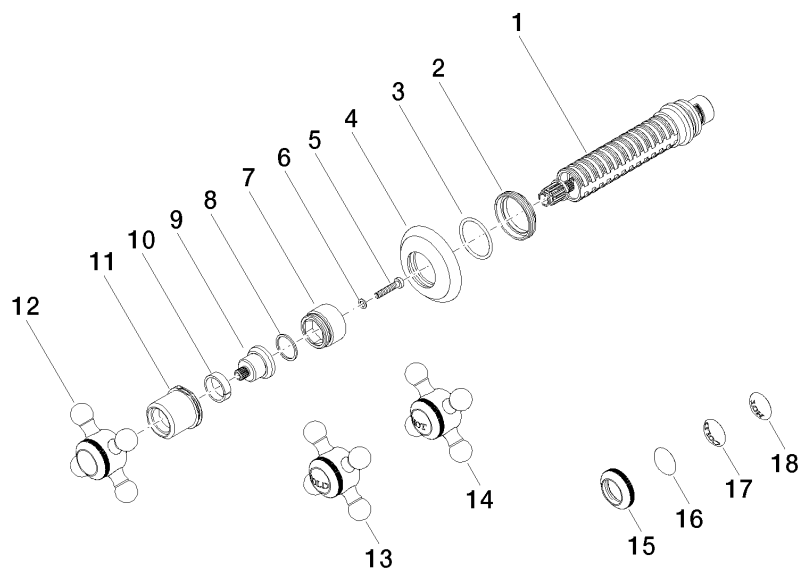
Codes & Standards

|                             |                |      |                        |
|-----------------------------|----------------|------|------------------------|
| ADA                         | ASME A112.18.1 | cUPC | Scottish Water Byelaws |
| UK Water Supply Regulations |                |      |                        |

Certificates and sustainability

|           |              |
|-----------|--------------|
| WRAS_2010 | IAPMO_4976 ( |
|-----------|--------------|

36 608 361



## Spare parts list

| Number | Item Number        | Designation     | Number of units | Lead time |
|--------|--------------------|-----------------|-----------------|-----------|
| 4      | 09 27 36 102-08    | rosette         | 1.00            | 40        |
| 13     | 04 20 36 100 00-08 | handle ( cold ) | 1.00            | 40        |
| 15     | 09 20 36 005-08    | handle          | 1.00            | 40        |
| 12     | 04 20 36 100 02-08 | handle          | 1.00            | 40        |
| 1      | 90 90 03 127 00 90 | top             | 1.00            | 2         |
| 14     | 04 20 36 100 01-08 | handle ( hot )  | 1.00            | 40        |
| 17     | 09 26 01 010 90    | accessories     | 1.00            | 2         |
| 2      | 09 23 10 125-00    | nut             | 1.00            | 10        |
| 7      | 09 18 30 007-08    | sleeve          | 1.00            | 60        |
| 16     | 09 26 01 016 90    | accessories     | 1.00            | 2         |
| 11     | 09 21 02 161-08    | cover           | 1.00            | 40        |
| 18     | 09 26 01 011 90    | accessories     | 1.00            | 2         |
| 9      | 09 12 12 064-08    | base            | 1.00            | 60        |
| 6      | 09 30 11 194 90    | disc            | 1.00            | 2         |
| 3      | 90 14 10 063 00 90 | seal            | 1.00            | 2         |
| 10     | 90 14 15 021 00 90 | ring            | 1.00            | 2         |
| 8      | 90 28 10 030 00 90 | ring            | 1.00            | 2         |
| 5      | 90 30 30 075 00 90 | screw           | 1.00            | 2         |