



MADISON Volume Control clockwise-closing 3/4" - Durabrass (23kt Gold)



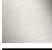



MADISON

36 608 361



- Flange diameter 2-1/8"
- Ceramic disc cartridge
- Includes 3x porcelain inserts: HOT, COLD and BLANK (ADA)

(ADA)

	Durabrass (23kt Gold)	36 608 361-09
	Chrome	36 608 361-00
	Brushed Platinum	36 608 361-06
	Platinum	36 608 361-08
	Brushed Durabrass (23kt Gold)	36 608 361-28
	Brushed Dark Platinum	36 608 361-99

Required article



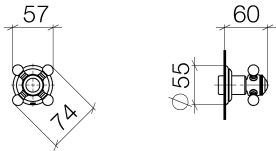
- Rough for volume control 3/4" -** 35 608 970-90
- Max. rough in depth 5-3/4" 0010
 - Min. rough in depth 3"



MADISON Volume Control clockwise-closing 3/4" - Durabron (23kt Gold)

MADISON

36 608 361



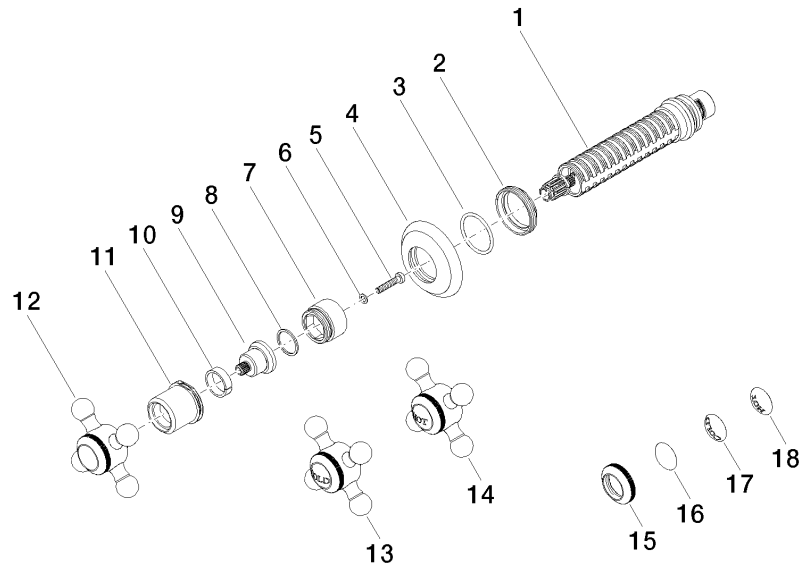
Codes & Standards

ADA	ASME A112.18.1	cUPC	Scottish Water Byelaws
UK Water Supply Regulations			

Certificates and sustainability

WRAS_2010	IAPMO_4976 (
-----------	--------------

36 608 361



Spare parts list

Number	Item Number	Designation	Number of units	Lead time
7	09 18 30 007-09	sleeve	1.00	60
9	09 12 12 064-09	base	1.00	60
15	09 20 36 005-09	handle	1.00	40
16	09 26 01 016 90	accessories	1.00	2
17	09 26 01 010 90	accessories	1.00	2
1	90 90 03 127 00 90	top	1.00	2
2	09 23 10 125-00	nut	1.00	10
11	09 21 02 161-09	cover	1.00	40
4	09 27 36 102-09	rosette	1.00	40
13	04 20 36 100 00-09	handle (cold)	1.00	40
14	04 20 36 100 01-09	handle (hot)	1.00	40
12	04 20 36 100 02-09	handle	1.00	40
6	09 30 11 194 90	disc	1.00	2
18	09 26 01 011 90	accessories	1.00	2
5	90 30 30 075 00 90	screw	1.00	2
10	90 14 15 021 00 90	ring	1.00	2
8	90 28 10 030 00 90	ring	1.00	2
3	90 14 10 063 00 90	seal	1.00	2