



MADISON Volume Control clockwise-closing 3/4" - Brushed Durabrass (23kt Gold)



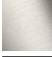


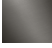
MADISON

36 608 361



- Flange diameter 2-1/8"
- Ceramic disc cartridge
- Includes 3x porcelain inserts: HOT, COLD and BLANK (ADA)

(ADA)

	Brushed Durabrass (23kt Gold)	36 608 361-28
	Chrome	36 608 361-00
	Brushed Platinum	36 608 361-06
	Platinum	36 608 361-08
	Durabrass (23kt Gold)	36 608 361-09
	Brushed Dark Platinum	36 608 361-99

Required article



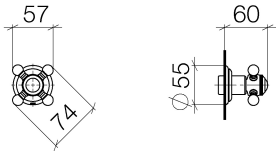
- Rough for volume control 3/4" - 35 608 970-90 0010**
- Max. rough in depth 5-3/4"
  - Min. rough in depth 3"



MADISON Volume Control clockwise-closing 3/4" - Brushed Durabronz (23kt Gold)

MADISON

36 608 361



Codes & Standards

ADA	Scottish Water Byelaws	UK Water Supply Regulations
-----	---------------------------	--------------------------------

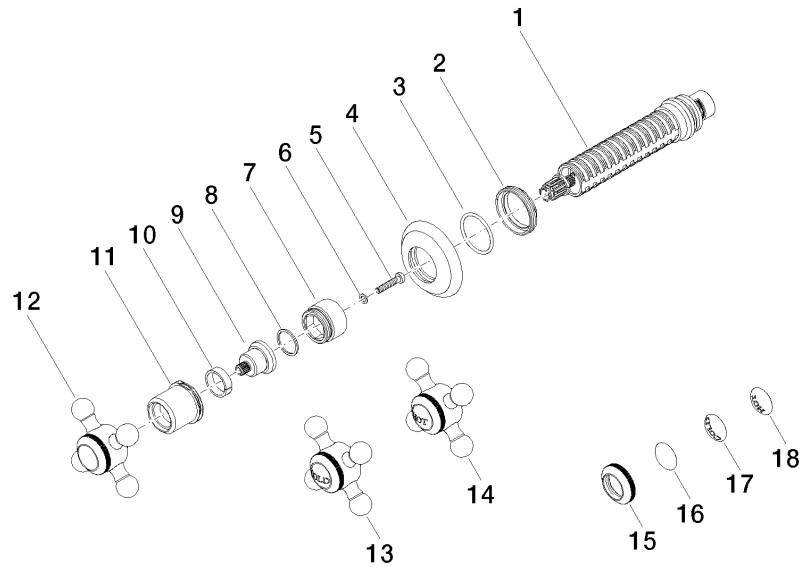
Certificates and sustainability

WRAS\_2010

**MADISON Volume Control clockwise-closing 3/4" - Brushed Durabronz (23kt Gold)**

MADISON

36 608 361





# MADISON Volume Control clockwise-closing 3/4" - Brushed Durabronz (23kt Gold)

MADISON

36 608 361

## Spare parts list

Number	Item Number	Designation	Number of units	Lead time
9	09 12 12 064-28	base	1.00	-
Spare part can no longer be ordered, please order the replacement item				
14	04 20 36 100 01-28	handle ( hot )	1.00	20
15	09 20 36 005-28	handle	1.00	20
17	09 26 01 010 90	accessories	1.00	2
13	04 20 36 100 00-28	handle ( cold )	1.00	20
11	09 21 02 161-28	cover	1.00	20
12	04 20 36 100 02-28	handle	1.00	20
2	09 23 10 125-00	nut	1.00	10
4	09 27 36 102-28	rosette	1.00	20
1	90 90 03 127 00 90	top	1.00	2
6	09 30 11 194 90	disc	1.00	2
18	09 26 01 011 90	accessories	1.00	2
16	09 26 01 016 90	accessories	1.00	2
7	09 18 30 007-28	sleeve	1.00	-
Spare part can no longer be ordered, please order the replacement item				
5	90 30 30 075 00 90	screw	1.00	2
3	90 14 10 063 00 90	seal	1.00	2
10	90 14 15 021 00 90	ring	1.00	2
8	90 28 10 030 00 90	ring	1.00	2