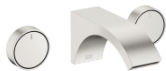


## CYO Wall-mounted three-hole lavatory mixer without drain - Brushed Platinum

CYO

36 707 811



- 6-1/4" Projection
  - Rigid spout
  - Rectangular aerated stream
  - Valve hole diameter 1-1/2"
  - Spout hole diameter 1-1/2"
  - Handle Ø 2-3/8"
  - Water flow rate limited to max. 1.2 gpm
  - lead-free
  - This product can help a building meet the requirements of Green Building Rating Systems, e.g. LEED®, BREEAM®, DGNB
- NOTE: Handle inserts are sold separately!**

NOTE: Handle inserts are sold separately!

|  |   |               |
|--|---|---------------|
|  | Brushed Platinum                            | 36 707 811-06 |
|  | Chrome                                      | 36 707 811-00 |
|  | Dark Chrome                                 | 36 707 811-19 |
|  | Brushed Durabronze (23kt Gold)              | 36 707 811-28 |
|  | Platinum / Brushed Platinum                 | 36 707 811-36 |
|  | Durabronze / Brushed Durabronze (23kt Gold) | 36 707 811-38 |
|  | Brushed Dark Platinum                       | 36 707 811-99 |

### Required article



- Rough for wall-mounted faucet , spout in center -** 35 700 970-90 0010
- Max. rough in depth 5-3/4"
  - Min. rough in depth 3-3/8"

### Required article



- Rough for wall-mounted faucet flexible positioning -** 35 720 970-90 0010
- Max. rough in depth 5-3/4"
  - Min. rough in depth 3-3/8"

36 707 811

mm [inches]



Flow rate chart



### Codes & Standards

|                        |                                    |           |            |
|------------------------|------------------------------------|-----------|------------|
| ASME A112.18.1         | California Energy Commission (CEC) | cUPC      | DIN 4109   |
| EPA WaterSense         | ISO 3822                           | NSF372    | NSF61      |
| Scottish Water Byelaws | UK Water Supply Regulations        | Ü-Zeichen | WaterSense |





CYO Wall-mounted three-hole lavatory mixer without drain - Brushed Platinum

CYO

36 707 811

Certificates and sustainability

WRAS\_2111

IAPMO\_N-4976

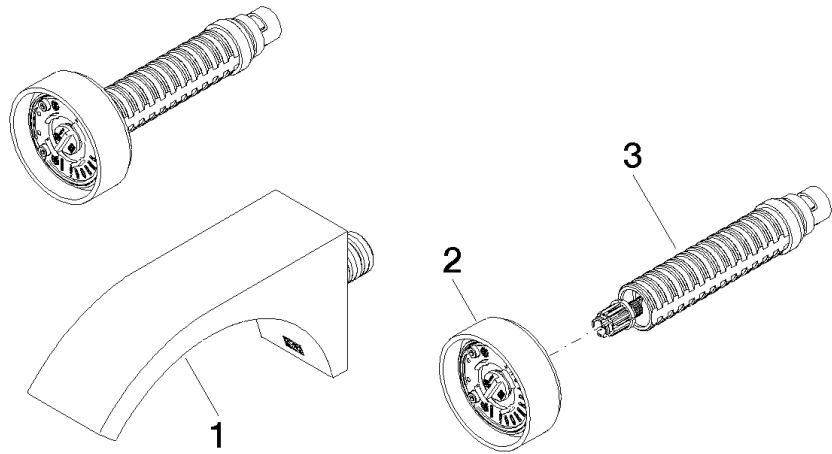
IAPMO\_6397

LGA\_38

IAPMO\_8834

IAPMO\_4976 (

36 707 811



Spare parts list

| Number | Item Number        | Designation   | Number of units | Lead time |
|--------|--------------------|---|-----------------|-----------|
| 1      | 13 800 811-06      | CYO Lavatory spout, wall-mounted without drain - Brushed Platinum | 1.00            | 10        |
| 3      | 90 90 03 171 01 90 | top   | 1.00            | 2         |
| 2      | 90 18 40 290 00-06 | handle  | 1.00            | 10        |