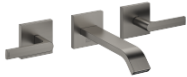




IMO Wall-mounted three-hole lavatory mixer without drain - Brushed Dark Platinum

IMO

36 712 671    Product version from 4/1/2024



- 6-3/4" Projection
  - Rigid spout
  - Rectangular aerated stream
  - Valve hole diameter 1-5/8"
  - Spout hole diameter 1-5/8"
  - Individual flanges 2-3/8" x 2-3/8"
  - Water flow rate limited to max. 1.2 gpm
  - lead-free
  - This product can help a building meet the requirements of Green Building Rating Systems, e.g. LEED®, BREEAM®, DGNB (ADA)
- (ADA)

	Brushed Dark Platinum	36 712 671-99 0010
	Chrome	36 712 671-00 0010
	Brushed Platinum	36 712 671-06 0010
	Dark Chrome	36 712 671-19 0010
	Brushed Light Gold	36 712 671-27 0010
	Matte Black	36 712 671-33 0010
	Brushed Chrome	36 712 671-93 0010

Required article



- |  |                    |
|--|--------------------|
| <b>Rough for wall-mounted faucet , spout in center -</b> | 35 700 970-90 0010 |
| •Min. rough in depth 4-3/8"                              |                    |
| •Max. rough in depth 5-7/8"                              |                    |

Required article



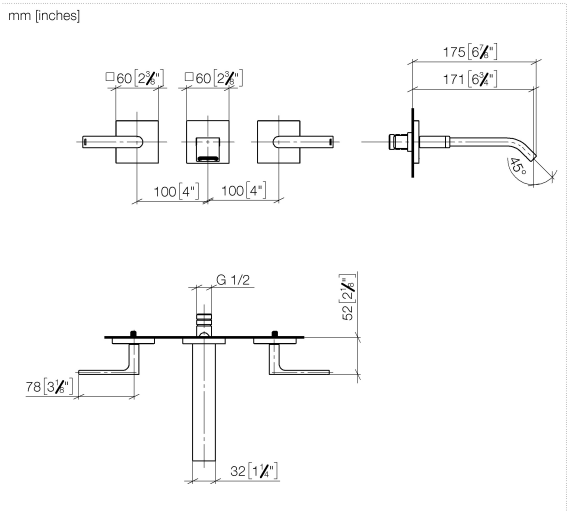
- |   |                    |
|---|--------------------|
| <b>Rough for wall-mounted faucet flexible positioning -</b> | 35 720 970-90 0010 |
| •Min. rough in depth 4-3/8"                                 |                    |
| •Max. rough in depth 5-7/8"                                 |                    |



IMO Wall-mounted three-hole lavatory mixer without drain - Brushed Dark Platinum

IMO

36 712 671 Product version from 4/1/2024



Codes & Standards

ADA ASME A112.18.1 cUPC EPA WaterSense

NSF372 NSF61 WaterSense



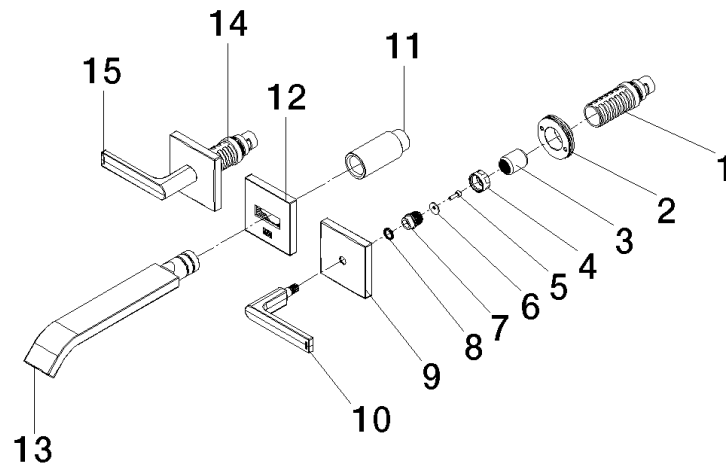
Certificates and sustainability

IAPMO\_N-4976 IAPMO\_6397 IAPMO\_8834 IAPMO\_4976 (

# IMO Wall-mounted three-hole lavatory mixer without drain - Brushed Dark Platinum

IMO

36 712 671 Product version from 4/1/2024



## Spare parts list

Number	Item Number	Designation	Number of units	Lead time
14	90 90 03 156 00 90	top	1.00	2
4	09 23 30 074 90	nut	2.00	2
7	09 12 12 057 90	fixing cap	2.00	2
12	90 27 67 027 00-99	rosette	1.00	20
10	90 20 67 025 00-99	handle ( cold )	1.00	20
1	90 90 03 157 00 90	top	1.00	2
8	09 14 03 187 90	seal	2.00	2
5	09 30 30 167 90	screw	2.00	2
9	09 27 78 033-99	rosette	2.00	20
3	09 12 12 059 90	sleeve	2.00	2
6	09 30 11 193 90	disc	2.00	2
2	90 21 02 108 00 90	disc	2.00	2
15	90 20 67 026 00-99	handle ( hot )	1.00	20
11	09 24 03 081 10 90	extension	1.00	2
13	90 28 22 413 00-99	spout	1.00	20