


TARA Wall-mounted three-hole lavatory mixer without drain - Brushed Bronze

TARA

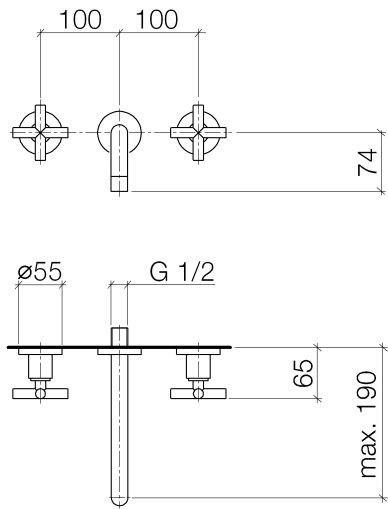
36 712 892 Product version from 4/1/2024



- 7-1/2" Projection
 - Rigid spout
 - Round aerated stream
 - Valve hole diameter 1-5/8"
 - Spout hole diameter 1-5/8"
 - Flange diameter 2-1/8"
 - Water flow rate limited to max. 1.2 gpm
 - lead-free
 - This product can help a building meet the requirements of Green Building Rating Systems, e.g. LEED®, BREEAM®, DGNB
- (ADA)

	Brushed Bronze	36 712 892-42 0010
	Chrome	36 712 892-00 0010
	Brushed Platinum	36 712 892-06 0010
	Platinum	36 712 892-08 0010
	Dark Chrome	36 712 892-19 0010
	Brushed Durabrass (23kt Gold)	36 712 892-28 0010
	Matte Black	36 712 892-33 0010
	Brushed Dark Brass	36 712 892-39 0010
	Brushed Champagne (22kt Gold)	36 712 892-46 0010
	Champagne (22kt Gold)	36 712 892-47 0010
	Brushed Chrome	36 712 892-93 0010
	Brushed Dark Platinum	36 712 892-99 0010

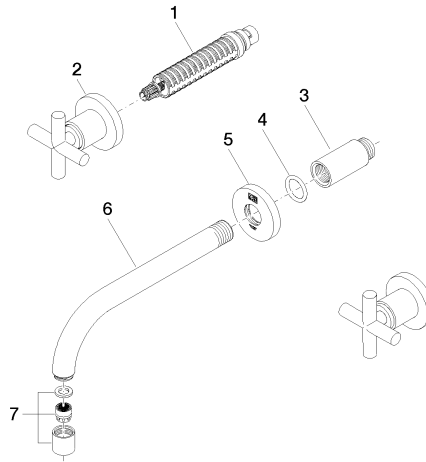
36 712 892 Product version from 4/1/2024



Codes & Standards			
ADA	ASME A112.18.1	California Energy Commission (CEC)	cUPC
EPA WaterSense	NSF372	NSF61	WaterSense

Certificates and sustainability			
IAPMO_N-4976	IAPMO_6397	IAPMO_4976 (IAPMO_8834

Parts for other
finishes can be found
here: [Chrome](#)



Spare parts list

Number	Item Number	Designation	Number of units	Lead time
1	90 90 03 157 00 90	top	2.00	2
4	90 14 10 026 00 90	seal	1.00	2
7	90 23 01 019 02-42	aerator	1.00	30
2	36 310 892-42	TARA Volume Control - Brushed Bronze	2.00	30
3	09 24 03 081 10 90	extension	1.00	2
6	04 28 22 090 10-42	spout	1.00	60
5	09 27 22 501-42	rosette	1.00	60