



TARA Wall-mounted three-hole lavatory mixer without drain - Brushed Dark Brass

TARA

36 717 892 Product version from 4/1/2024



- 9-1/2" Projection
- Rigid spout
- Round aerated stream
- Valve hole diameter 1-5/8"
- Spout hole diameter 1-5/8"
- Flange diameter 2-1/8"
- Water flow rate limited to max. 1.2 gpm
- lead-free
- This product can help a building meet the requirements of Green Building Rating Systems, e.g. LEED®, BREEAM®, DGNB (ADA)

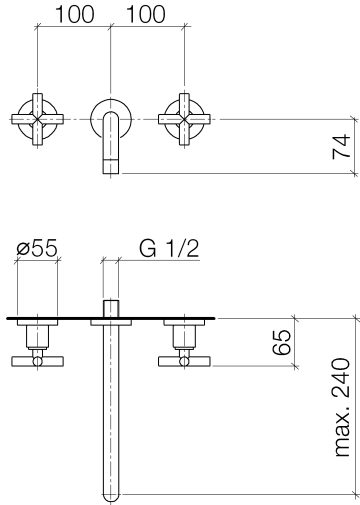
	Brushed Dark Brass	36 717 892-39 0010
	Chrome	36 717 892-00 0010
	Brushed Platinum	36 717 892-06 0010
	Platinum	36 717 892-08 0010
	Dark Chrome	36 717 892-19 0010
	Brushed Durabrass (23kt Gold)	36 717 892-28 0010
	Matte Black	36 717 892-33 0010
	Brushed Bronze	36 717 892-42 0010
	Brushed Champagne (22kt Gold)	36 717 892-46 0010
	Champagne (22kt Gold)	36 717 892-47 0010
	Brushed Chrome	36 717 892-93 0010
	Brushed Dark Platinum	36 717 892-99 0010



TARA Wall-mounted three-hole lavatory mixer without drain - Brushed Dark Brass

TARA

36 717 892 Product version from 4/1/2024



Codes & Standards

ADA	California Energy Commission (CEC)	NSF372	NSF61
-----	------------------------------------	--------	-------

Certificates and sustainability

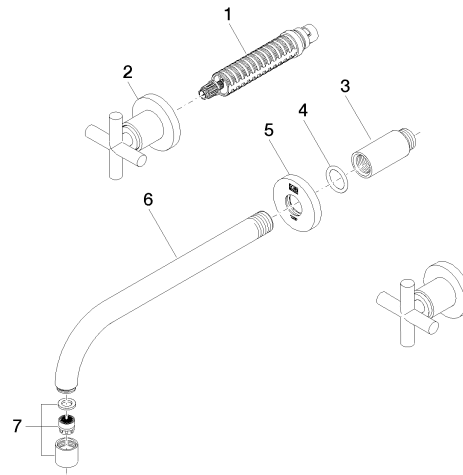
IAPMO_N-4976 IAPMO_6397

TARA Wall-mounted three-hole lavatory mixer without drain - Brushed Dark Brass

TARA

36 717 892 Product version from 4/1/2024

Parts for other
finishes can be found
here: [Chrome](#)



Spare parts list

Number	Item Number	Designation	Number of units	Lead time
6	04 28 22 105 10-39	spout	1.00	60
7	90 23 01 019 02-39	aerator	1.00	30
5	09 27 22 501-39	rosette	1.00	60
4	90 14 10 026 00 90	seal	1.00	2
2	36 310 892-39	TARA Volume Control - Brushed Dark Brass	2.00	30
3	09 24 03 081 10 90	extension	1.00	2
1	90 90 03 157 00 90	top	2.00	2