

TARA Wall-mounted three-hole lavatory mixer without drain - Brushed Bronze

TARA

36 717 892 Product version from 4/1/2024

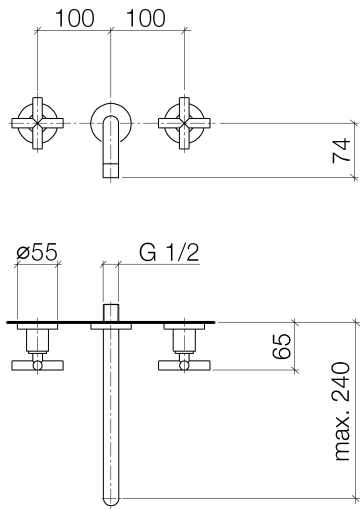


- 9-1/2" Projection
- Rigid spout
- Round aerated stream
- Valve hole diameter 1-5/8"
- Spout hole diameter 1-5/8"
- Flange diameter 2-1/8"
- Water flow rate limited to max. 1.2 gpm
- lead-free
- This product can help a building meet the requirements of Green Building Rating Systems, e.g. LEED®, BREEAM®, DGNB

(ADA)

	Brushed Bronze	36 717 892-42 0010
	Chrome	36 717 892-00 0010
	Brushed Platinum	36 717 892-06 0010
	Platinum	36 717 892-08 0010
	Dark Chrome	36 717 892-19 0010
	Brushed Durabronze (23kt Gold)	36 717 892-28 0010
	Matte Black	36 717 892-33 0010
	Brushed Champagne (22kt Gold)	36 717 892-46 0010
	Champagne (22kt Gold)	36 717 892-47 0010
	Brushed Chrome	36 717 892-93 0010
	Brushed Dark Platinum	36 717 892-99 0010

36 717 892    Product version from 4/1/2024



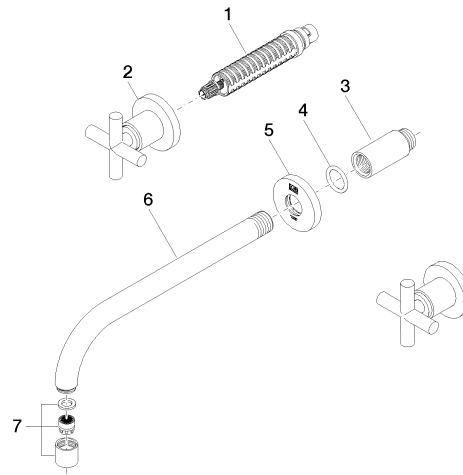
Codes & Standards

ADA	ASME A112.18.1	California Energy Commission (CEC)	cUPC
EPA WaterSense	NSF372	NSF61	WaterSense

Certificates and sustainability

IAPMO_N-4976	IAPMO_6397	IAPMO_4976 (	IAPMO_8834
--------------	------------	--------------	------------

Parts for other  
finishes can be found  
here: [Chrome](#)



## Spare parts list

Number	Item Number	Designation	Number of units	Lead time
3	09 24 03 081 10 90	extension	1.00	2
5	09 27 22 501-42	rosette	1.00	60
2	36 310 892-42	TARA Volume Control - Brushed Bronze	2.00	30
1	90 90 03 157 00 90	top	2.00	2
4	90 14 10 026 00 90	seal	1.00	2
7	90 23 01 019 02-42	aerator	1.00	30
6	04 28 22 105 10-42	spout	1.00	60