



TARA Wall-mounted three-hole lavatory mixer without drain - Champagne (22kt Gold)

TARA

36 717 892 Product version from 4/1/2024



- 9-1/2" Projection
 - Rigid spout
 - Round aerated stream
 - Valve hole diameter 1-5/8"
 - Spout hole diameter 1-5/8"
 - Flange diameter 2-1/8"
 - Water flow rate limited to max. 1.2 gpm
 - lead-free
 - This product can help a building meet the requirements of Green Building Rating Systems, e.g. LEED®, BREEAM®, DGNB (ADA)
- (ADA)

| | | |
|--|--------------------------------|--------------------|
| | Champagne (22kt Gold) | 36 717 892-47 0010 |
| | Chrome | 36 717 892-00 0010 |
| | Brushed Platinum | 36 717 892-06 0010 |
| | Platinum | 36 717 892-08 0010 |
| | Dark Chrome | 36 717 892-19 0010 |
| | Brushed Durabronze (23kt Gold) | 36 717 892-28 0010 |
| | Matte Black | 36 717 892-33 0010 |
| | Brushed Bronze | 36 717 892-42 0010 |
| | Brushed Champagne (22kt Gold) | 36 717 892-46 0010 |
| | Brushed Chrome | 36 717 892-93 0010 |
| | Brushed Dark Platinum | 36 717 892-99 0010 |

Required article



- Rough for wall-mounted faucet , spout in center -**
- 35 700 970-90 0010

 - Max. rough in depth 5-3/4"
 - Min. rough in depth 3-3/8"

Required article



- Rough for wall-mounted faucet flexible positioning -**
- 35 720 970-90 0010

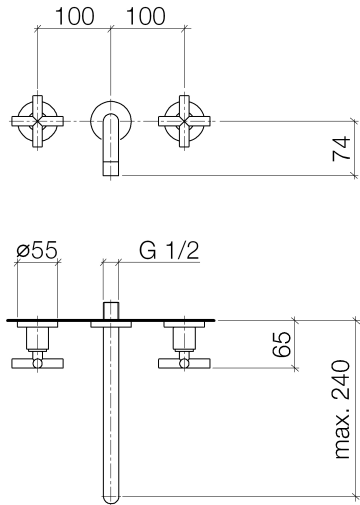
 - Max. rough in depth 5-3/4"
 - Min. rough in depth 3-3/8"



TARA Wall-mounted three-hole lavatory mixer without drain - Champagne (22kt Gold)

TARA

36 717 892 Product version from 4/1/2024



Codes & Standards

| | | | |
|----------------|----------------|------------------------------------|------------|
| ADA | ASME A112.18.1 | California Energy Commission (CEC) | cUPC |
| EPA WaterSense | NSF372 | NSF61 | WaterSense |



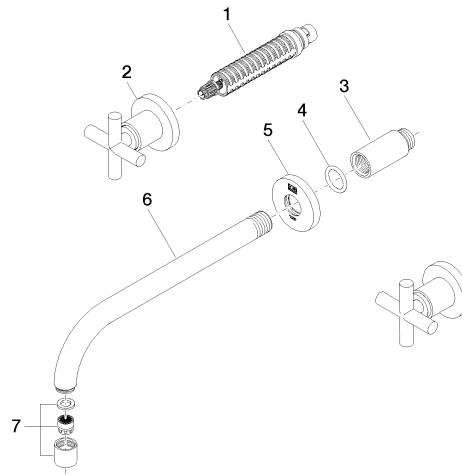
Certificates and sustainability

| | | | |
|--------------|------------|------------|--------------|
| IAPMO_N-4976 | IAPMO_6397 | IAPMO_8834 | IAPMO_4976 (|
|--------------|------------|------------|--------------|

TARA Wall-mounted three-hole lavatory mixer without drain - Champagne (22kt Gold)

TARA

36 717 892 Product version from 4/1/2024



Spare parts list

| Number | Item Number | Designation | Number of units | Lead time |
|--------|--------------------|---|-----------------|-----------|
| 5 | 09 27 22 501-47 | rosette | 1.00 | 30 |
| 6 | 04 28 22 105 10-47 | spout | 1.00 | 30 |
| 7 | 90 23 01 019 02-47 | aerator | 1.00 | 30 |
| 2 | 36 310 892-47 | TARA Volume Control - Champagne (22kt Gold) | 2.00 | 30 |
| 1 | 90 90 03 157 00 90 | top | 2.00 | 2 |
| 3 | 09 24 03 081 10 90 | extension | 1.00 | 2 |
| 4 | 90 14 10 026 00 90 | seal | 1.00 | 2 |