

META Wall-mounted single-lever mixer without drain - Brushed Dark Brass

META

36 860 660

Product version from 7/1/2023



- 7-1/2" Projection
  - Rigid spout
  - Round aerated stream
  - Spout hole diameter 1-1/2"
  - Hole diameter single-lever mixer 2-1/4"
  - 2-1/8" diameter flange for spout
  - Diameter flange for mixer 3-1/8"
  - Water flow rate limited to max. 1.2 gpm
  - lead-free
  - This product can help a building meet the requirements of Green Building Rating Systems, e.g. LEED®, BREEAM®, DGNB
- (ADA)

	Brushed Dark Brass	36 860 660-39 0010
	Chrome	36 860 660-00 0010
	Brushed Platinum	36 860 660-06 0010
	Dark Chrome	36 860 660-19 0010
	Light gold	36 860 660-26 0010
	Brushed Light Gold	36 860 660-27 0010
	Matte Black	36 860 660-33 0010
	Brushed Bronze	36 860 660-42 0010
	Brushed Champagne (22kt Gold)	36 860 660-46 0010
	Champagne (22kt Gold)	36 860 660-47 0010
	Brushed Chrome	36 860 660-93 0010
	Brushed Dark Platinum	36 860 660-99 0010

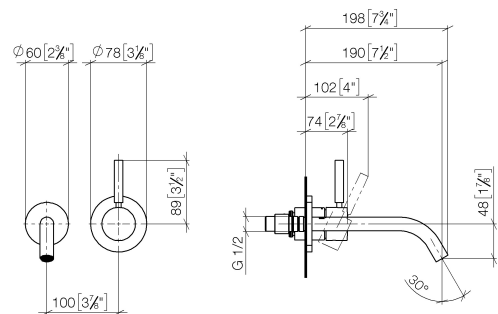


META Wall-mounted single-lever mixer without drain - Brushed Dark Brass

META

36 860 660    Product version from 7/1/2023

mm [inches]



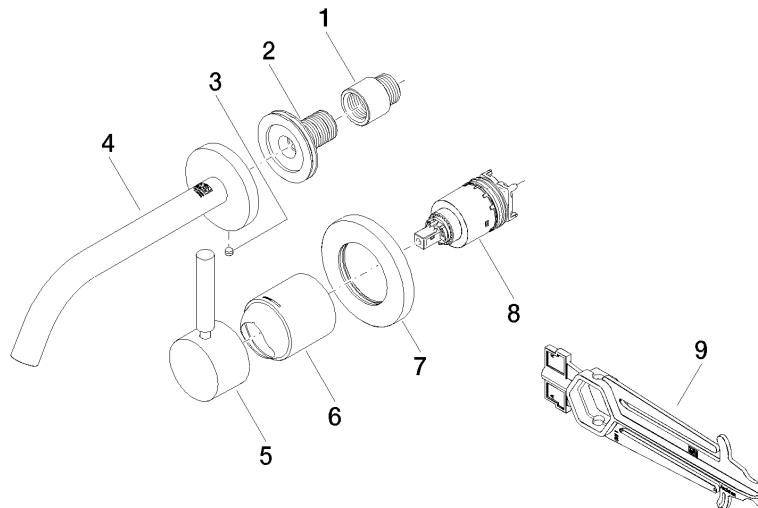
Codes & Standards

ADA	California Energy Commission (CEC)	NSF372	NSF61
-----	------------------------------------	--------	-------

Certificates and sustainability

IAPMO\_N-4976    IAPMO\_6397

Parts for other  
finishes can be found  
here: [Chrome](#)



## Spare parts list

Number	Item Number	Designation	Number of units	Lead time
6	09 11 02 288-39	cover	1.00	60
5	90 20 66 007 00-39	handle	1.00	30
4	90 28 22 323 01-39	spout	1.00	30
2	90 24 03 280 00 90	nipple	1.00	2
7	90 27 62 011 00-39	rosette	1.00	30
1	09 24 03 072 10 90	nipple	1.00	2
9	90 30 09 064 00 90	key	1.00	2
8	90 15 05 064 01 90	cartridge	1.00	2
3	09 31 11 112 90	pin	1.00	60