

## META META PURE Wall-mounted single-lever mixer without drain - Brushed Platinum

META

36 860 664 Product version from 7/1/2023



- 7-1/2" Projection
- Rigid spout
- Round aerated stream
- Spout hole diameter 1-1/2"
- Hole diameter single-lever mixer 2-1/4"
- 2-1/8" diameter flange for spout
- Diameter flange for mixer 3-1/8"
- Water flow rate limited to max. 1.2 gpm
- lead-free
- This product can help a building meet the requirements of Green Building Rating Systems, e.g. LEED®, BREEAM®, DGNB

	Brushed Platinum	36 860 664-06 0010
	Chrome	36 860 664-00 0010
	Dark Chrome	36 860 664-19 0010
	Light gold	36 860 664-26 0010
	Brushed Light Gold	36 860 664-27 0010
	Matte Black	36 860 664-33 0010
	Brushed Bronze	36 860 664-42 0010
	Brushed Champagne (22kt Gold)	36 860 664-46 0010
	Champagne (22kt Gold)	36 860 664-47 0010
	Brushed Chrome	36 860 664-93 0010
	Brushed Dark Platinum	36 860 664-99 0010

### Required article



- Rough for wall-mounted faucet -** 35 860 970-90 0010
- Max. rough in depth 3-3/4"
  - Min. rough in depth 3-1/8"
  - Rough can be rotated to position the lever on top or to the left of the spout.

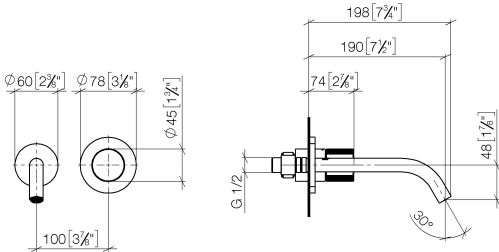
META META PURE Wall-mounted single-lever mixer without drain - Brushed Platinum

META


36 860 664

Product version from 7/1/2023

mm [inches]

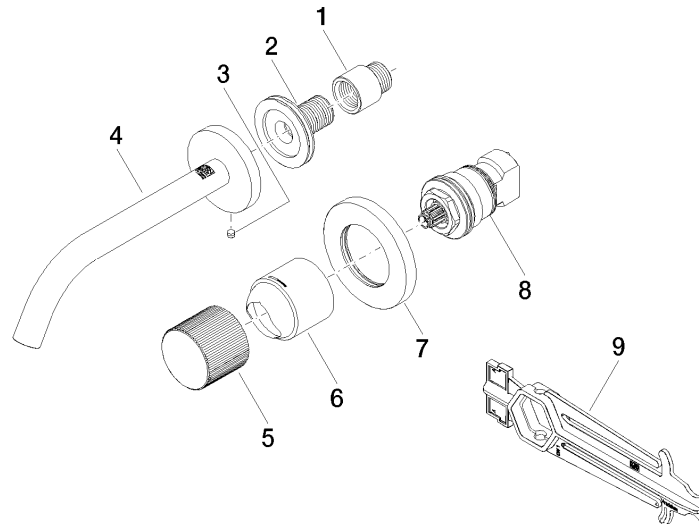


Codes & Standards

ASME A112.18.1	California Energy Commission (CEC)	cUPC	EPA WaterSense
NSF372	NSF61	WaterSense	

Certificates and sustainability

IAPMO_N-4976	IAPMO_6397	IAPMO_4976 (	IAPMO_8834
--------------	------------	--------------	------------



## Spare parts list

Number	Item Number	Designation	Number of units	Lead time
5	09 20 66 010-06	handle	1.00	10
8	90 90 03 169 02 90	top	1.00	2
1	09 24 03 072 10 90	nipple	1.00	2
7	90 27 62 011 00-06	rosette	1.00	10
4	90 28 22 323 01-06	spout	1.00	10
6	09 11 02 389-06	cover	1.00	10
2	90 24 03 280 00 90	nipple	1.00	2
3	09 31 11 112 90	pin	1.00	60
9	90 30 09 064 00 90	key	1.00	2