



LULU Wall-mounted single-lever mixer without drain - Brushed Platinum



LULU

36 860 710



- 7-7/8" Projection
  - Rigid spout
  - Round aerated stream
  - Spout hole diameter 1-1/2"
  - Hole diameter single-lever mixer 2-1/4"
  - Flange 3-1/8" x 3-1/8"
  - Water flow rate limited to max. 1.2 gpm
  - lead-free
  - This product can help a building meet the requirements of Green Building Rating Systems, e.g. LEED®, BREEAM®, DGNB
- (ADA)**

(ADA)

	Brushed Platinum	36 860 710-06 0010
	Chrome	36 860 710-00 0010

Required article



- Rough for wall-mounted faucet -** 35 860 970-90 0010
- Max. rough in depth 3-3/4"
  - Min. rough in depth 3-1/8"
  - Rough can be rotated to position the lever on top or to the left of the spout.

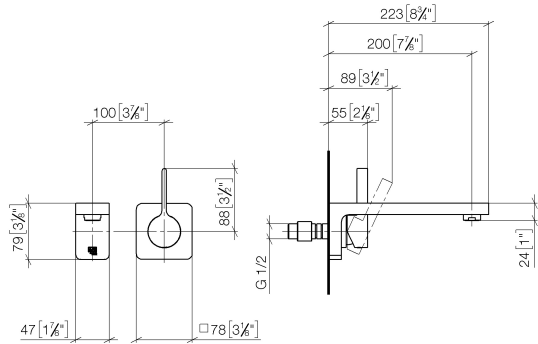


LULU Wall-mounted single-lever mixer without drain - Brushed Platinum

LULU

36 860 710

mm [inches]



Codes & Standards

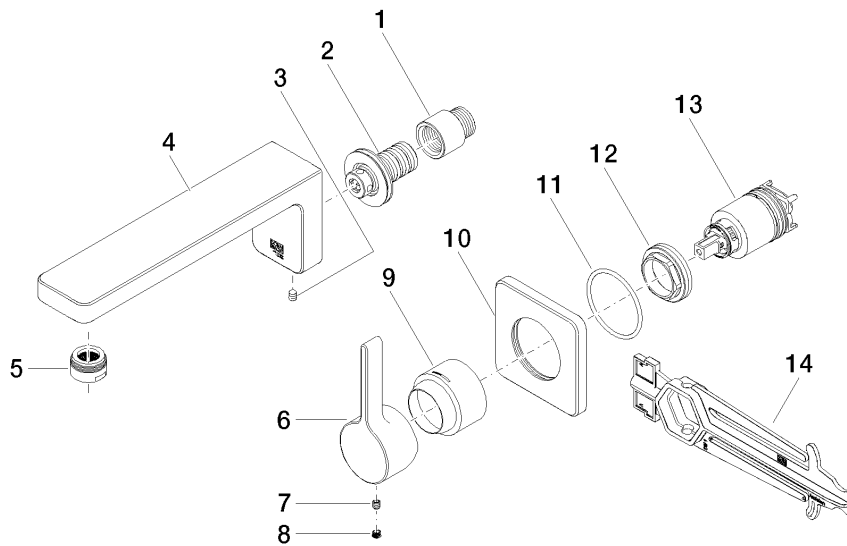
ADA	ASME A112.18.1	California Energy Commission (CEC)	cUPC
EPA WaterSense	NSF372	NSF61	WaterSense



Certificates and sustainability

IAPMO_N-4976	IAPMO_6397	IAPMO_4976 (	IAPMO_8834
--------------	------------	--------------	------------

36 860 710



## Spare parts list

Number	Item Number	Designation	Number of units	Lead time
5	90 23 01 118 04-06	aerator	1.00	10
2	90 24 03 108 00 90	nipple set	1.00	2
4	09 11 71 091-06	spout	1.00	10
10	09 27 71 001-06	rosette	1.00	60
13	90 15 05 064 01 90	cartridge	1.00	2
9	09 11 02 530-06	cover	1.00	10
12	09 24 04 105 90	nut	1.00	2
1	09 24 03 072 10 90	nipple	1.00	2
6	09 20 71 001-06	handle	1.00	60
11	90 14 10 049 00 90	seal	1.00	2
3	90 31 11 004 00 90	pin	1.00	2
7	90 31 11 030 00 90	pin	1.00	2
14	90 30 09 064 00 90	key	1.00	2
8	90 31 20 109 00 90	plug	1.00	2