

VAIA Wall-mounted single-lever mixer without drain - Brushed Dark Brass

VAIA

36 860 809 Product version from 4/1/2025



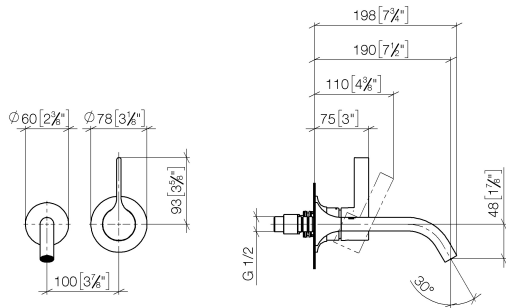
- 7-1/2" Projection
- Rigid spout
- Round aerated stream
- Spout hole diameter 1-1/2"
- Hole diameter single-lever mixer 2-1/4"
- Mixer with flange Ø 3-1/8"
- 2-1/8" diameter flange for spout
- Water flow rate limited to max. 1.2 gpm
- lead-free
- This product can help a building meet the requirements of Green Building Rating Systems, e.g. LEED®, BREEAM®, DGNB

(ADA)

	Brushed Dark Brass	36 860 809-39 0010
	Chrome	36 860 809-00 0010
	Brushed Platinum	36 860 809-06 0010
	Platinum	36 860 809-08 0010
	Dark Chrome	36 860 809-19 0010
	Brushed Durabronze (23kt Gold)	36 860 809-28 0010
	Brushed Bronze	36 860 809-42 0010
	Brushed Champagne (22kt Gold)	36 860 809-46 0010
	Champagne (22kt Gold)	36 860 809-47 0010
	Brushed Dark Platinum	36 860 809-99 0010

36 860 809 Product version from 4/1/2025

mm [inches]



Codes & Standards

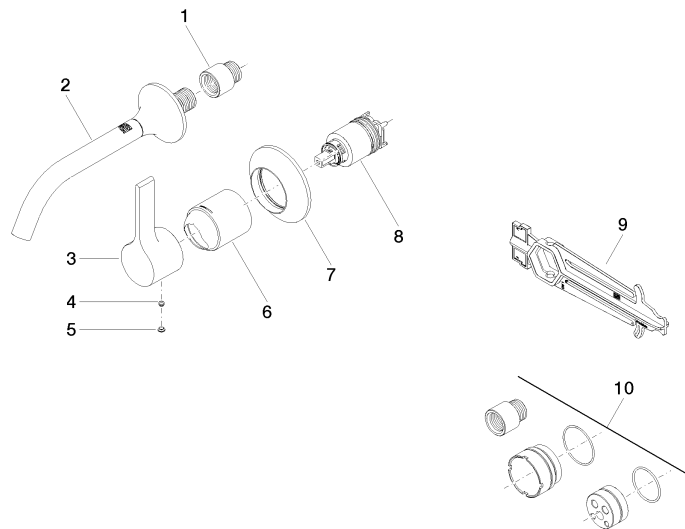
ADA	California Energy Commission (CEC)	NSF372	NSF61
-----	--	--------	-------

Certificates and sustainability

IAPMO_N-4976 IAPMO_6397

36 860 809 Product version from 4/1/2025

Parts for other
finishes can be found
here: [Chrome](#)



Spare parts list

Number	Item Number	Designation	Number of units	Lead time
8	90 15 05 064 01 90	cartridge	1.00	2
9	90 30 09 064 00 90	key	1.00	2
6	09 11 02 288-39	cover	1.00	60
1	09 24 03 072 10 90	nipple	1.00	2
7	90 27 80 012 00-39	rosette	1.00	30
3	09 20 80 021-39	handle	1.00	60
4	90 31 11 063 00 90	pin	1.00	2
10	12 869 970 90	Extension 3/4" -	1.00	2
5	90 31 20 087 00-39	plug	1.00	30
2	13 800 809-39 0010	spout	1.00	-

Spare part can no longer be ordered, please order the replacement item