

VAIA Wall-mounted single-lever mixer without drain - Brushed Dark Platinum

VAIA

36 860 809 Product version from 4/1/2025



- 7-1/2" Projection
- Rigid spout
- Round aerated stream
- Spout hole diameter 1-1/2"
- Hole diameter single-lever mixer 2-1/4"
- Mixer with flange Ø 3-1/8"
- 2-1/8" diameter flange for spout
- Water flow rate limited to max. 1.2 gpm
- lead-free
- This product can help a building meet the requirements of Green Building Rating Systems, e.g. LEED®, BREEAM®, DGNB (ADA)

(ADA)

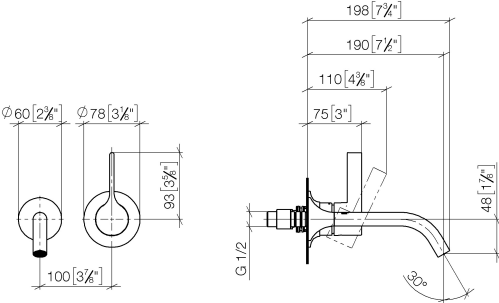
	Brushed Dark Platinum	36 860 809-99 0010
	Chrome	36 860 809-00 0010
	Brushed Platinum	36 860 809-06 0010
	Platinum	36 860 809-08 0010
	Dark Chrome	36 860 809-19 0010
	Brushed Durabronze (23kt Gold)	36 860 809-28 0010
	Brushed Dark Brass	36 860 809-39 0010
	Brushed Bronze	36 860 809-42 0010
	Brushed Champagne (22kt Gold)	36 860 809-46 0010
	Champagne (22kt Gold)	36 860 809-47 0010

Required article



- Rough for wall-mounted faucet -** 35 860 970-90 0010
- Max. rough in depth 3-3/4"
 - Min. rough in depth 3-1/8"
 - Rough can be rotated to position the lever on top or to the left of the spout.

mm [inches]

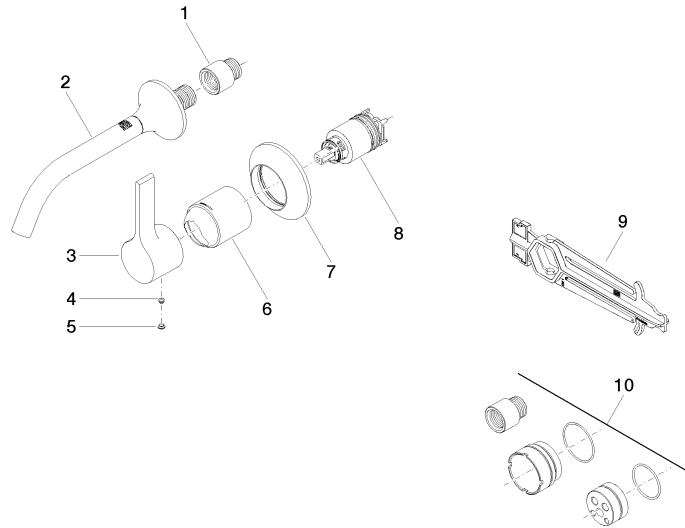


Codes & Standards

ADA	ASME A112.18.1	California Energy Commission (CEC)	cUPC
EPA WaterSense	NSF372	NSF61	WaterSense

Certificates and sustainability

IAPMO_N-4976	IAPMO_6397	IAPMO_4976 (IAPMO_8834
--------------	------------	--------------	------------



Spare parts list

Number	Item Number	Designation	Number of units	Lead time
1	09 24 03 072 10 90	nipple	1.00	2
8	90 15 05 064 01 90	cartridge	1.00	2
6	09 11 02 288-99	cover	1.00	20
7	90 27 80 012 00-99	rosette	1.00	20
2	13 800 809-99 0010	VAIA Lavatory spout, wall-mounted without drain - Brushed Dark Platinum	1.00	-
Spare part can no longer be ordered, please order the replacement item				
5	90 31 20 087 00-99	plug	1.00	20
3	09 20 80 021-99	handle	1.00	20
4	90 31 11 063 00 90	pin	1.00	2
9	90 30 09 064 00 90	key	1.00	2
10	12 869 970 90	Extension 3/4" -	1.00	2