





36 860 845 Product version from 4/1/2024



- 6-3/4" Projection
- Rigid spout
- Round aerated stream
- Spout hole diameter 1-1/2"
- Hole diameter single-lever mixer 2-1/4"
- Flange 3-1/8" x 3-1/8"
- Water flow rate limited to max. 1.5 gpm
- lead-free
- This product can help a building meet the requirements of Green Building Rating Systems, e.g. LEED®, BREEAM®, DGNB **(ADA)**

(ADA)

	Brushed Dark Platinum	36 860 845-99
	Chrome	36 860 845-00
	Brushed Platinum	36 860 845-06
	Dark Chrome	36 860 845-19
	Brushed Light Gold	36 860 845-27
	Matte Black	36 860 845-33
	Brushed Chrome	36 860 845-93

Required article



- Rough for wall-mounted faucet -** 35 860 970-90
0010
- Min. rough in depth 3-1/8"
 - Rough can be rotated to position the lever on top or to the left of the spout.
 - Max. rough in depth 3-3/4"

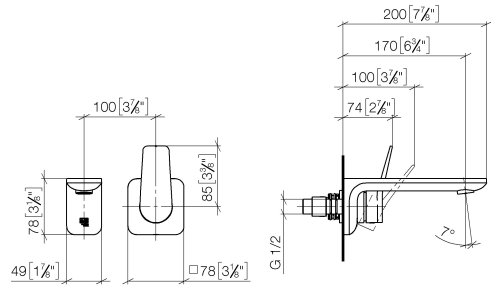


LISSE Wall-mounted single-lever mixer without drain - Brushed Dark Platinum

LISSE

36 860 845 Product version from 4/1/2024


mm [inches]



Flow rate chart



Codes & Standards

ADA	ASME A112.18.1	cUPC	EN 817
EPA WaterSense	NSF372	NSF61	Scottish Water Byelaws
UK Water Supply Regulations	WaterSense		



LISSE Wall-mounted single-lever mixer without drain - Brushed Dark Platinum

LISSE

36 860 845 Product version from 4/1/2024

Certificates and sustainability

IAPMO_N-4976	DVGW_DW-6512DN0	IAPMO_6397	WRAS_2107	IAPMO_4976 (
IAPMO_8834				

