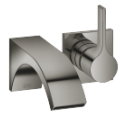




CYO Wall-mounted single-lever mixer without drain - Dark Chrome

CYO

36 861 811

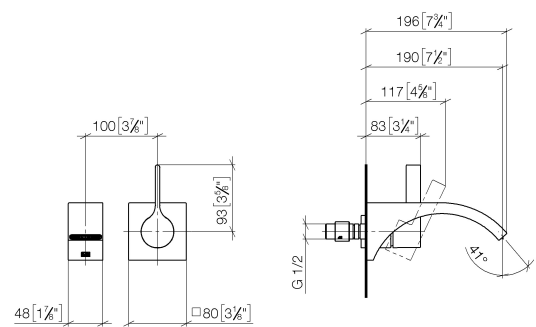


- 7-1/2" Projection
 - Rigid spout
 - Rectangular aerated stream
 - Spout hole diameter 1-1/2"
 - Hole diameter single-lever mixer 2-1/4"
 - Flange for mixer 3-1/8" x 3-1/8"
 - Water flow rate limited to max. 1.2 gpm
 - lead-free
 - This product can help a building meet the requirements of Green Building Rating Systems, e.g. LEED®, BREEAM®, DGNB
- (ADA)

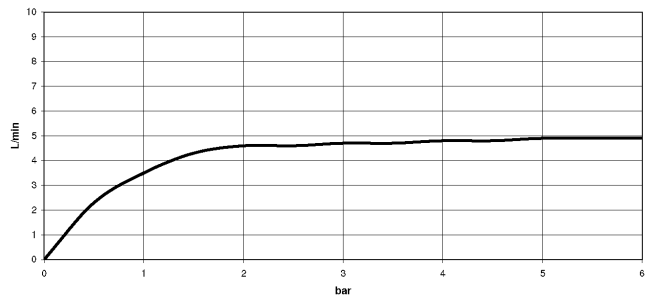
	Dark Chrome	36 861 811-19
	Chrome	36 861 811-00
	Brushed Platinum	36 861 811-06
	Brushed Durabronze (23kt Gold)	36 861 811-28
	Brushed Dark Platinum	36 861 811-99

36 861 811

mm [inches]



Flow rate chart



Codes & Standards

ASME A112.18.1	California Energy Commission (CEC)	cUPC	NSF372
NSF61			



CYO Wall-mounted single-lever mixer without drain - Dark Chrome

CYO

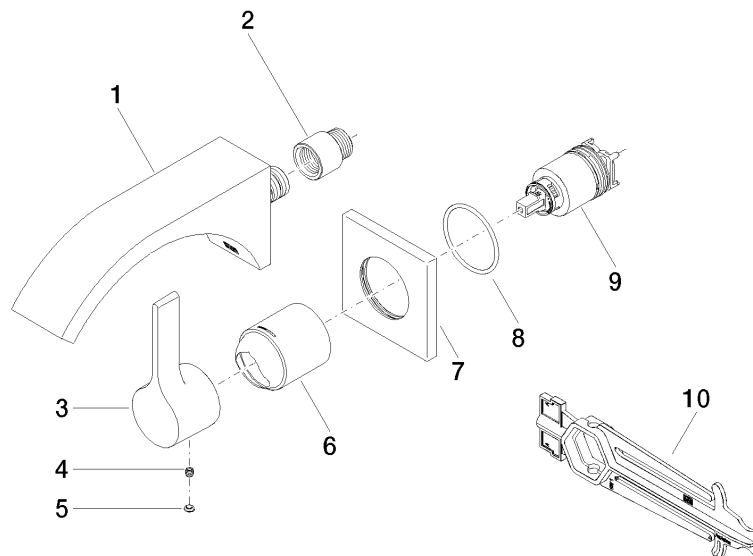
36 861 811

Certificates and sustainability

IAPMO_N-4976 IAPMO_6397 IAPMO_4976 (

36 861 811

Parts for other
finishes can be found
here: [Chrome](#)



Spare parts list

Number	Item Number	Designation	Number of units	Lead time
2	09 24 03 072 10 90	nipple	1.00	2
9	90 15 05 064 01 90	cartridge	1.00	2
1	13 805 811-19	CYO Lavatory spout, wall-mounted without drain - Dark Chrome	1.00	20
3	09 20 80 021-19	handle	1.00	20
5	90 31 20 087 00-19	plug	1.00	20
6	09 11 02 288-19	cover	1.00	20
4	90 31 11 030 00 90	pin	1.00	2
8	90 14 10 049 00 90	seal	1.00	2
10	90 30 09 064 00 90	key	1.00	2
7	09 27 78 039-19	rosette	1.00	20