

MEM Wall-mounted single-lever mixer with cover plate without drain - Chrome

MEM

36 864 782



- 8-1/8" Projection
- Rigid spout
- Rectangular aerated stream
- Spout hole diameter 1-1/2"
- Hole diameter single-lever mixer 2-1/4"
- Cover plate 3-1/8" x 7-1/8"
- Water flow rate limited to max. 1.2 gpm
- lead-free
- This product can help a building meet the requirements of Green Building Rating Systems, e.g. LEED®, BREEAM®, DGNB **(ADA)**

(ADA)

	Chrome	36 864 782-00 0010
	Brushed Platinum	36 864 782-06 0010
	Platinum	36 864 782-08 0010
	Dark Chrome	36 864 782-19 0010
	Brushed Durabrass (23kt Gold)	36 864 782-28 0010
	Brushed Champagne (22kt Gold)	36 864 782-46 0010
	Champagne (22kt Gold)	36 864 782-47 0010
	Brushed Dark Platinum	36 864 782-99 0010

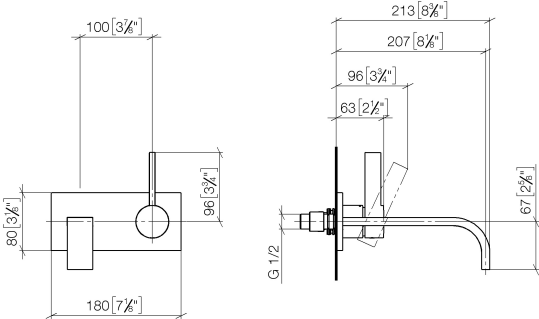
Required article



- Rough for wall-mounted faucet -** 35 860 970-90 0010
- Max. rough in depth 3-3/4"
 - Min. rough in depth 3-1/8"
 - Rough can be rotated to position the lever on top or to the left of the spout.

36 864 782

mm [inches]



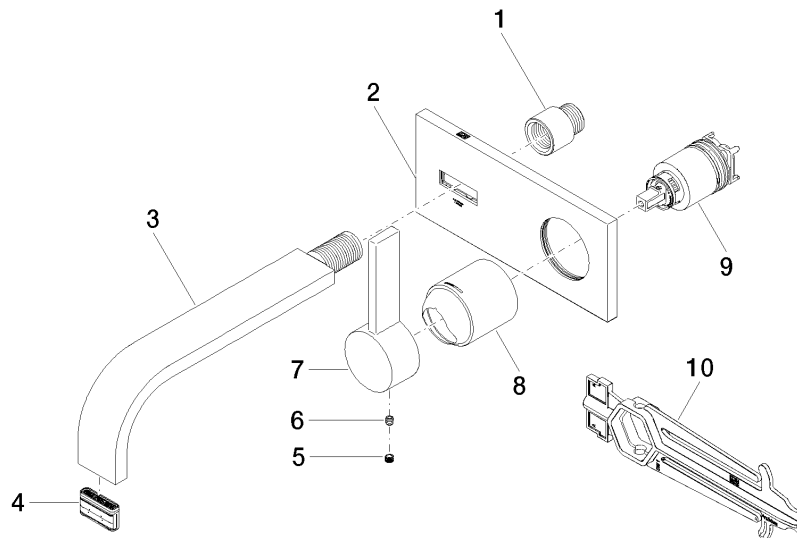
Codes & Standards

ADA	ASME A112.18.1	California Energy Commission (CEC)	cUPC
EPA WaterSense	NSF372	NSF61	WaterSense

Certificates and sustainability

IAPMO_N-4976	IAPMO_6397	IAPMO_8834	IAPMO_4976 (
--------------	------------	------------	--------------

36 864 782



Spare parts list

Number	Item Number	Designation	Number of units	Lead time
4	90 29 03 118 00 90	aerator	1.00	2
2	90 11 01 170 00-00	plate	1.00	10
9	90 15 05 064 01 90	cartridge	1.00	2
7	09 20 78 058-00	handle	1.00	10
3	04 28 22 149 10-00	spout	1.00	10
1	09 24 03 072 10 90	nipple	1.00	2
8	09 11 02 288-00	cover	1.00	10
10	90 30 09 064 00 90	key	1.00	2
6	90 31 11 030 00 90	pin	1.00	2
5	90 31 20 109 00 90	plug	1.00	2