

META META SLIM Wall-mounted single-lever mixer without drain - Brushed Champagne (22kt Gold)

META

36 867 662 Product version from 7/1/2023



- 4-7/8" Projection
- Rigid spout
- Round aerated stream
- Hole diameter single-lever mixer 2-1/4"
- Spout hole diameter 1-3/8"
- Mixer with flange Ø 3-1/8"
- 2-1/8" diameter flange for spout
- Water flow rate limited to max. 1.2 gpm
- lead-free
- This product can help a building meet the requirements of Green Building Rating Systems, e.g. LEED®, BREEAM®, DGNB

(ADA)

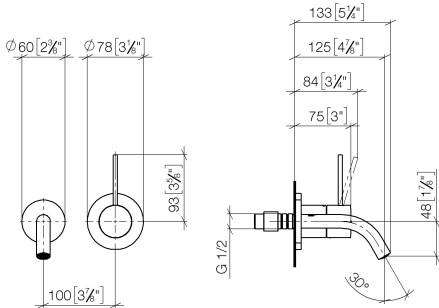
	Brushed Champagne (22kt Gold)	36 867 662-46 0010
	Chrome	36 867 662-00 0010
	Brushed Platinum	36 867 662-06 0010
	Light gold	36 867 662-26 0010
	Brushed Light Gold	36 867 662-27 0010
	Matte Black	36 867 662-33 0010
	Brushed Dark Brass	36 867 662-39 0010
	Brushed Bronze	36 867 662-42 0010
	Champagne (22kt Gold)	36 867 662-47 0010
	Brushed Chrome	36 867 662-93 0010
	Brushed Dark Platinum	36 867 662-99 0010



META META SLIM Wall-mounted single-lever mixer without drain - Brushed Champagne (22kt Gold)

META

36 867 662 Product version from 7/1/2023
mm [inches]



Codes & Standards

ADA	ASME A112.18.1	California Energy Commission (CEC)	cUPC
EPA WaterSense	NSF372	NSF61	WaterSense



Certificates and sustainability

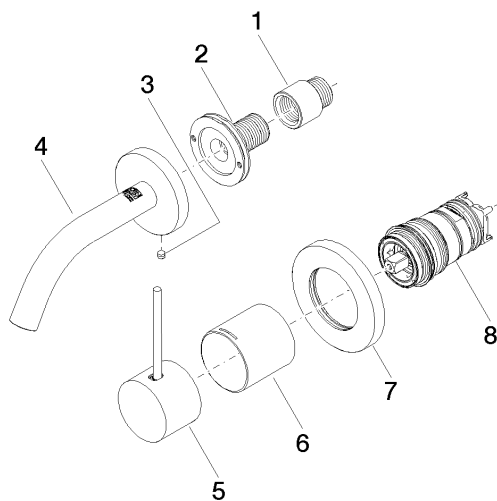
IAPMO_N-4976	IAPMO_6397	IAPMO_4976 (IAPMO_8834
--------------	------------	--------------	------------

META META SLIM Wall-mounted single-lever mixer without drain - Brushed Champagne (22kt Gold)

META

36 867 662 Product version from 7/1/2023

Parts for other
finishes can be found
here: [Chrome](#)



Spare parts list

Number	Item Number	Designation	Number of units	Lead time
3	09 31 11 112 90	pin	1.00	60
2	90 24 03 280 00 90	nipple	1.00	2
8	90 15 05 044 02 90	cartridge	1.00	2
1	09 24 03 072 10 90	nipple	1.00	2
4	90 28 22 363 00-46	spout	1.00	30
5	90 20 66 022 00-46	handle	1.00	30
6	09 11 02 336-46	sleeve	1.00	60
7	90 27 62 011 00-46	rosette	1.00	30