

MEM Wall-mounted single-lever mixer without drain - Chrome



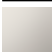


MEM

36 867 782



- 4-7/8" Projection
  - Rigid spout
  - Rectangular aerated stream
  - Spout hole diameter 1-3/8"
  - Hole diameter single-lever mixer 2-1/4"
  - 3-1/8" x 2-3/8" flange for spout
  - Flange for mixer 3-1/8" x 3-1/8"
  - Water flow rate limited to max. 1.2 gpm
  - lead-free
  - This product can help a building meet the requirements of Green Building Rating Systems, e.g. LEED®, BREEAM®, DGNB
- (ADA)**

(ADA)

	Chrome	36 867 782-00 0010
	Brushed Platinum	36 867 782-06 0010
	Platinum	36 867 782-08 0010
	Brushed Durabronze (23kt Gold)	36 867 782-28 0010
	Brushed Dark Platinum	36 867 782-99 0010

Required article

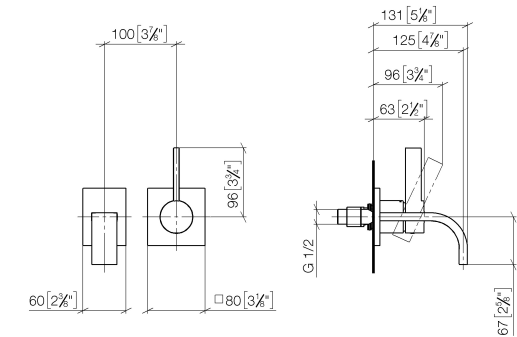


- Rough for wall-mounted faucet -**

35 860 970-90 0010
- Min. rough in depth 3-1/8"
  - Max. rough in depth 3-3/4"
  - Rough can be rotated to position the lever on top or to the left of the spout.

36 867 782

mm [inches]



Codes & Standards

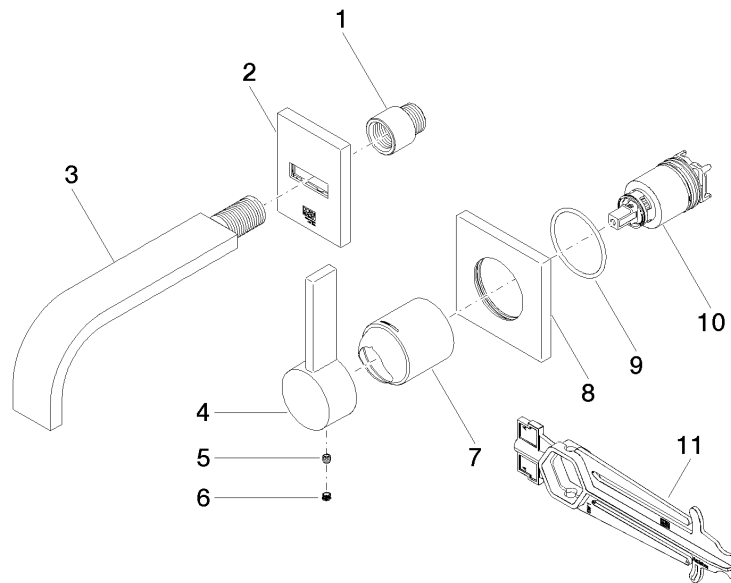
ADA	ASME A112.18.1	California Energy Commission (CEC)	cUPC
EPA WaterSense	NSF372	NSF61	WaterSense



Certificates and sustainability

IAPMO_6397	IAPMO_N-4976	IAPMO_4976 (	IAPMO_8834
------------	--------------	--------------	------------

36 867 782



## Spare parts list

Number	Item Number	Designation	Number of units	Lead time
2	90 27 78 055 00-00	rosette	1.00	10
4	09 20 78 058-00	handle	1.00	10
3	90 28 22 357 01-00	spout	1.00	10
7	09 11 02 288-00	cover	1.00	10
10	90 15 05 064 01 90	cartridge	1.00	2
1	09 24 03 072 10 90	nipple	1.00	2
8	09 27 78 039-00	rosette	1.00	10
11	90 30 09 064 00 90	key	1.00	2
6	90 31 20 109 00 90	plug	1.00	2
5	90 31 11 030 00 90	pin	1.00	2
9	90 14 10 049 00 90	seal	1.00	2