

Pressure Balance Valve without diverter


VAIA

36 900 809

Product version from 5/1/2023



- Cover plate Ø 5-7/8"

	Champagne (22kt Gold)	36 900 809-47
	Chrome	36 900 809-00
	Brushed Platinum	36 900 809-06
	Platinum	36 900 809-08
	Dark Chrome	36 900 809-19
	Brushed Light Gold	36 900 809-27
	Brushed Durabrass (23kt Gold)	36 900 809-28
	Brushed Bronze	36 900 809-42
	Brushed Champagne (22kt Gold)	36 900 809-46
	Brushed Dark Platinum	36 900 809-99

Required article



- Pressure Balance Valve -

•Min. rough in depth 3-1/8"

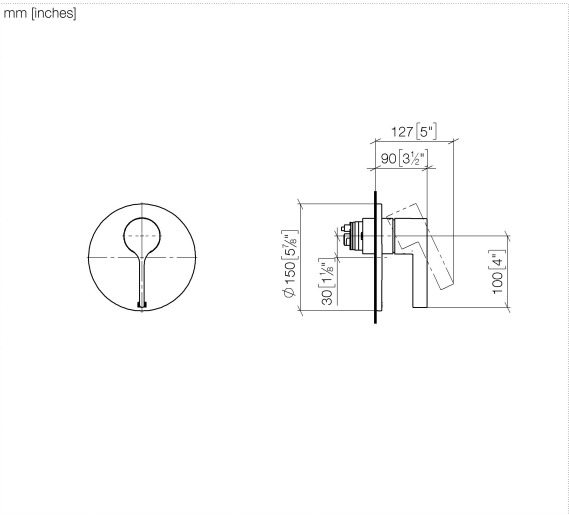
•Max. rough in depth 4-1/8"

35 920 970 90

Pressure Balance Valve without diverter

VAIA

36 900 809 Product version from 5/1/2023



Flow rate chart



Codes & Standards

ASME A112.18.1 cUPC



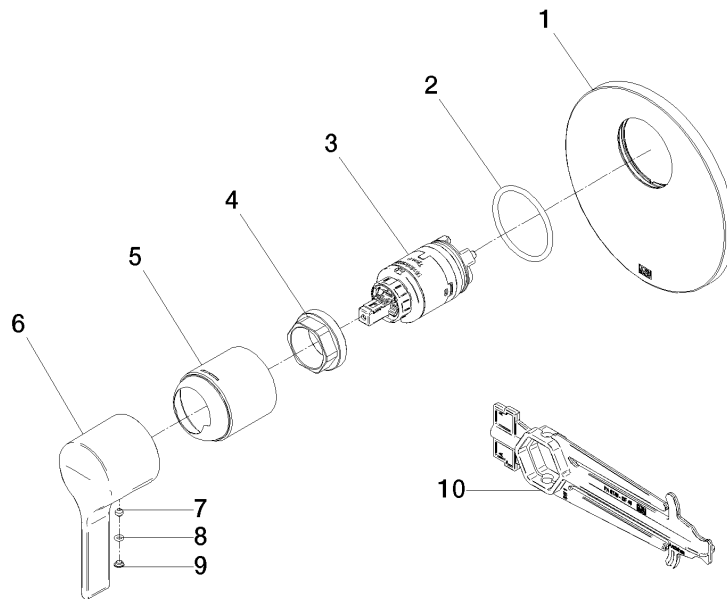
Pressure Balance Valve without diverter

VAIA

36 900 809 Product version from 5/1/2023

Certificates and sustainability

IAPMO_4976 (



Spare parts list

Number	Item Number	Designation	Number of units	Lead time
8	09 14 10 133 90	seal	1.00	2
9	09 31 20 087-47	plug	1.00	30
10	90 30 09 064 00 90	key	1.00	2
3	90 15 05 069 00 90	cartridge	1.00	2
5	09 11 02 260-47	sleeve	1.00	60
2	09 14 10 084 90	seal	1.00	2
7	90 31 11 063 00 90	pin	1.00	2
6	09 20 80 023-47	handle	1.00	30
1	09 11 02 262-47	plate	1.00	30
4	09 24 04 448 90	nut	1.00	2