






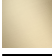



Pressure Balance Valve without diverter

LISSE

36 900 845 Product version from 5/1/2024



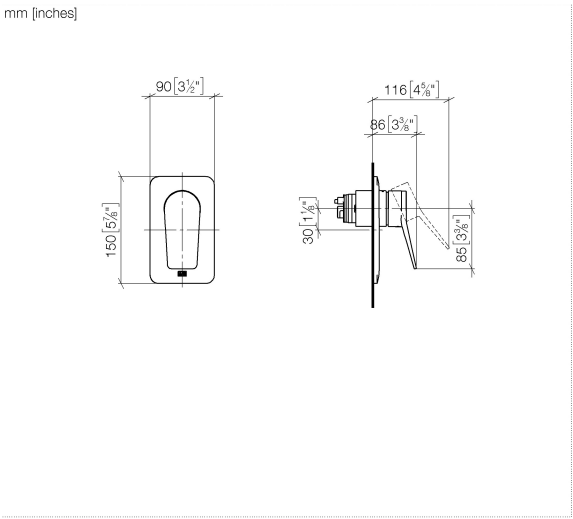
- Cover plate 3-1/2" x 5-7/8"

	Dark Chrome	36 900 845-19
	Chrome	36 900 845-00
	Brushed Platinum	36 900 845-06
	Brushed Light Gold	36 900 845-27
	Matte Black	36 900 845-33
	Brushed Chrome	36 900 845-93
	Brushed Dark Platinum	36 900 845-99

Required article



- Pressure Balance Valve -** 35 920 970 90
- Min. rough in depth 3-1/8"
 - Max. rough in depth 4-1/8"

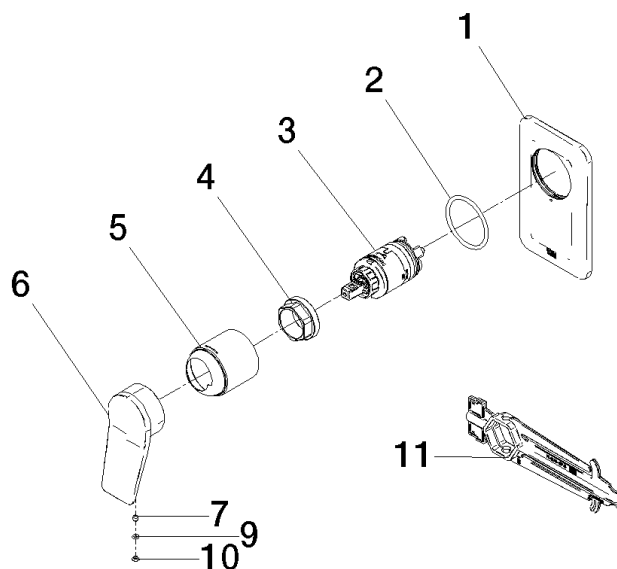


Codes & Standards

ASME A112.18.1 cUPC

Certificates and sustainability

IAPMO_4976 (



Spare parts list

Number	Item Number	Designation	Number of units	Lead time
5	09 11 02 260-19	sleeve	1.00	20
2	09 14 10 084 90	seal	1.00	2
10	09 31 20 087-19	plug	1.00	60
11	90 30 09 064 00 90	key	1.00	2
4	09 24 04 448 90	nut	1.00	2
9	09 14 10 133 90	seal	1.00	2
1	09 11 02 300-19	plate	1.00	60
3	90 15 05 069 00 90	cartridge	1.00	2
7	90 31 11 030 00 90	pin	1.00	2
6	09 20 84 022-19	handle	1.00	60