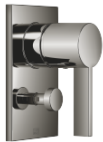


Pressure Balance Valve with diverter

SERIES SPECIFIC

36 915 670

Product version from 5/1/2024



- Automatic diverter
- Cover plate 3-1/2" x 5-7/8"

| | | |
|---|-------------------------------|---------------|
|  | Dark Chrome | 36 915 670-19 |
|  | Chrome | 36 915 670-00 |
|  | Brushed Platinum | 36 915 670-06 |
|  | Platinum | 36 915 670-08 |
|  | Brushed Light Gold | 36 915 670-27 |
|  | Brushed Durabrass (23kt Gold) | 36 915 670-28 |
|  | Matte Black | 36 915 670-33 |
|  | Brushed Champagne (22kt Gold) | 36 915 670-46 |
|  | Champagne (22kt Gold) | 36 915 670-47 |
|  | Brushed Chrome | 36 915 670-93 |
|  | Brushed Dark Platinum | 36 915 670-99 |

Required article



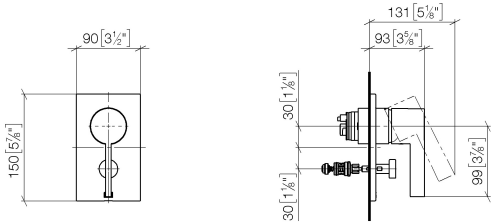
- Pressure Balance Valve -

•Min. rough in depth 3-1/8"

•Max. rough in depth 4-1/8"

35 920 970 90

mm [inches]



Flow rate chart



Codes & Standards

ASME A112.18.1 cUPC



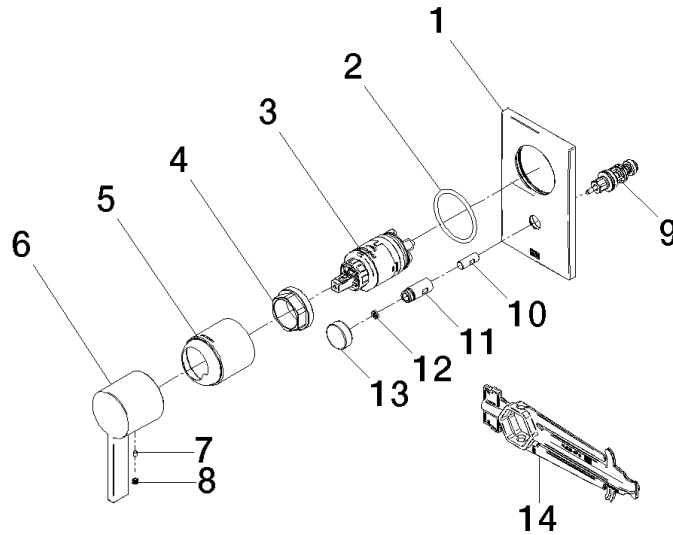
Pressure Balance Valve with diverter

SERIES SPECIFIC

36 915 670 Product version from 5/1/2024

Certificates and sustainability

IAPMO_4976 (



Spare parts list

| Number | Item Number | Designation | Number of units | Lead time |
|--------|--------------------|-------------|-----------------|-----------|
| 7 | 09 31 11 099 90 | pin | 1.00 | 2 |
| 10 | 09 24 03 226 90 | adaptor | 1.00 | 2 |
| 12 | 09 24 03 227 90 | screw | 1.00 | 2 |
| 11 | 09 31 09 139-19 | pull-rod | 1.00 | 20 |
| 14 | 90 30 09 064 00 90 | key | 1.00 | 2 |
| 2 | 09 14 10 084 90 | seal | 1.00 | 2 |
| 9 | 90 21 34 081 00 90 | diverter | 1.00 | 2 |
| 5 | 09 11 02 260-19 | sleeve | 1.00 | 20 |
| 13 | 09 20 78 056-19 | handle | 1.00 | 20 |
| 1 | 09 11 02 258-19 | plate | 1.00 | 60 |
| 8 | 90 31 20 109 00 90 | plug | 1.00 | 2 |
| 3 | 90 15 05 069 00 90 | cartridge | 1.00 | 2 |
| 6 | 09 20 67 007-19 | handle | 1.00 | 60 |
| 4 | 09 24 04 448 90 | nut | 1.00 | 2 |