



Pressure Balance Valve with diverter

SERIES SPECIFIC

36 915 670 Product version from 5/1/2024



- Automatic diverter
- Cover plate 3-1/2" x 5-7/8"

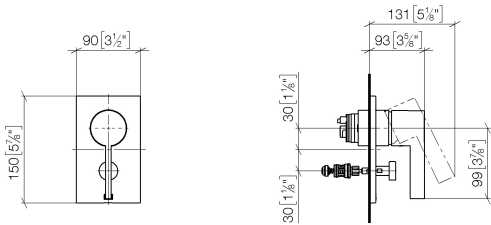
	Brushed Dark Platinum	36 915 670-99
	Chrome	36 915 670-00
	Brushed Platinum	36 915 670-06
	Platinum	36 915 670-08
	Dark Chrome	36 915 670-19
	Brushed Light Gold	36 915 670-27
	Brushed Durabrass (23kt Gold)	36 915 670-28
	Matte Black	36 915 670-33
	Brushed Champagne (22kt Gold)	36 915 670-46
	Champagne (22kt Gold)	36 915 670-47
	Brushed Chrome	36 915 670-93

Required article

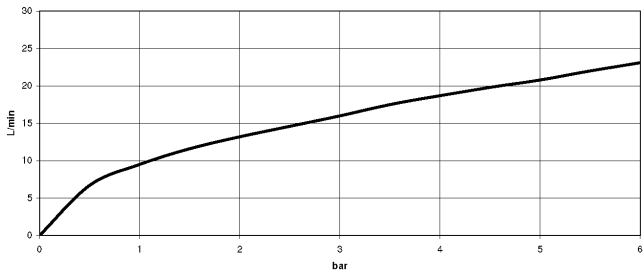


- Pressure Balance Valve -** 35 920 970 90
- Min. rough in depth 3-1/8"
 - Max. rough in depth 4-1/8"

mm [inches]



Flow rate chart



Codes & Standards

ASME A112.18.1 cUPC



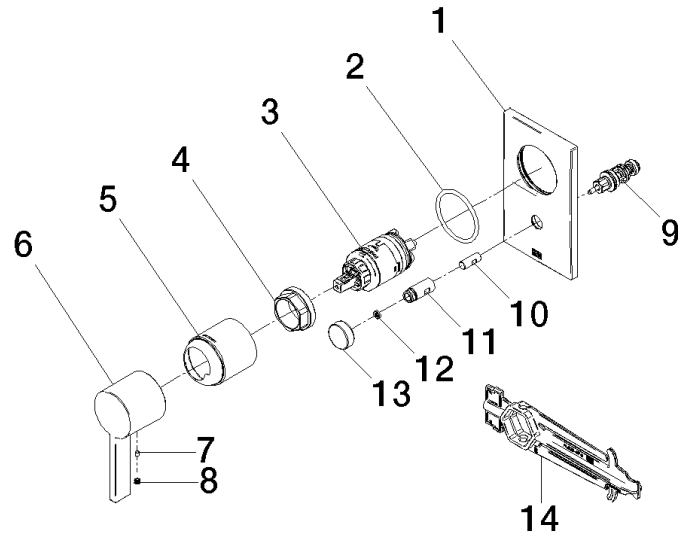
Pressure Balance Valve with diverter

SERIES SPECIFIC

36 915 670 Product version from 5/1/2024

Certificates and sustainability

IAPMO_4976 (



Spare parts list

Number	Item Number	Designation	Number of units	Lead time
	10 09 24 03 226 90	adaptor	1.00	2
	11 09 31 09 139-99	pull-rod	1.00	20
	9 90 21 34 081 00 90	diverter	1.00	2
	6 09 20 67 007-99	handle	1.00	20
	8 90 31 20 109 00 90	plug	1.00	2
	4 09 24 04 448 90	nut	1.00	2
	7 09 31 11 099 90	pin	1.00	2
	1 09 11 02 258-99	plate	1.00	20
	14 90 30 09 064 00 90	key	1.00	2
	12 09 24 03 227 90	screw	1.00	2
	5 09 11 02 260-99	sleeve	1.00	20
	2 09 14 10 084 90	seal	1.00	2
	3 90 15 05 069 00 90	cartridge	1.00	2
	13 09 20 78 056-99	handle	1.00	20