

SERIES-VARIOUS AQUAHALO Rain panel - Chrome

SERIES-VARIOUS

41 750 979 Product version from 4/1/2024



- Trim parts
- Rain panel with 3 different spray types
- AQUACIRCLE RAIN: Circular rain curtain, flow rate max. 1.8 gpm (at 3 bar)
- TEMPEST RAIN: Natural rain, flow rate max. 1.8 gpm (at 3 bar)
- DIAMOND RAIN: Rain ring, flow rate max. 1.8 gpm (at 3 bar)
- Outer diameter: 23-7/8", diameter of opening: 18-1/4"
- Weight: 13 lbs

Separate LED Power supply

Input LED Power supply

- Input 100-240V AC 50-60Hz

Output LED Power supply

- 350mA (CC)

Output Specification LED Power supply

- SELV (Safety Extra Low Voltage)
- Class 2

Ceiling module power supply

- 350mA (CC)
- Connecting cable 27-1/2"

Spot lighting






- LED color temperature: approx. 3000 K
- Lights protected against splashing
- Includes lights rated at energy efficiency class
- Technology: LED, not dimmable
- Light switch not included

Environment

- Not suitable for outdoor use.
- Not suitable for use in a steam room.
- Not suitable for use in chlorinated or salty environments.
- Observe the regulations concerning protected zones specified in DIN VDE 0100, Part 701 (IEC 60364-7-701).

To meet the North American plumbing standards, this application must be installed with a diverter (rough included).

Pre-assembly kit for three-way diverter included

| | | |
|---|-------------------------------|--------------------|
|  | Chrome | 41 750 979-00 0010 |
|  | Brushed Platinum | 41 750 979-06 0010 |
|  | Matte Black | 41 750 979-33 0010 |
|  | Brushed Champagne (22kt Gold) | 41 750 979-46 0010 |
|  | Champagne (22kt Gold) | 41 750 979-47 0010 |

Required article

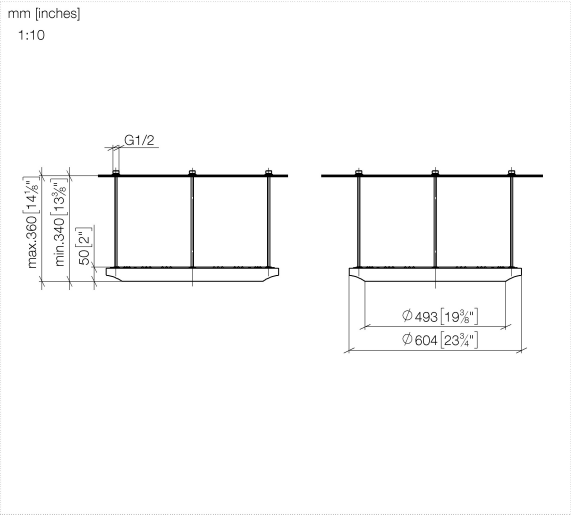


SERIES-VARIOUS AQUAHALO Installation rough - Chrome

35 750 970-00
0010

- Rough parts
- Pre-assembly kit for three-way diverter included
- Ceiling installation housing 23-7/8" x 23-7/8" x 3-3/4"
- Weight: 22 lbs
- Min. rough in depth 4-3/8"

41 750 979 Product version from 4/1/2024



Codes & Standards

ASME A112.18.1

cUPC

EPA WaterSense

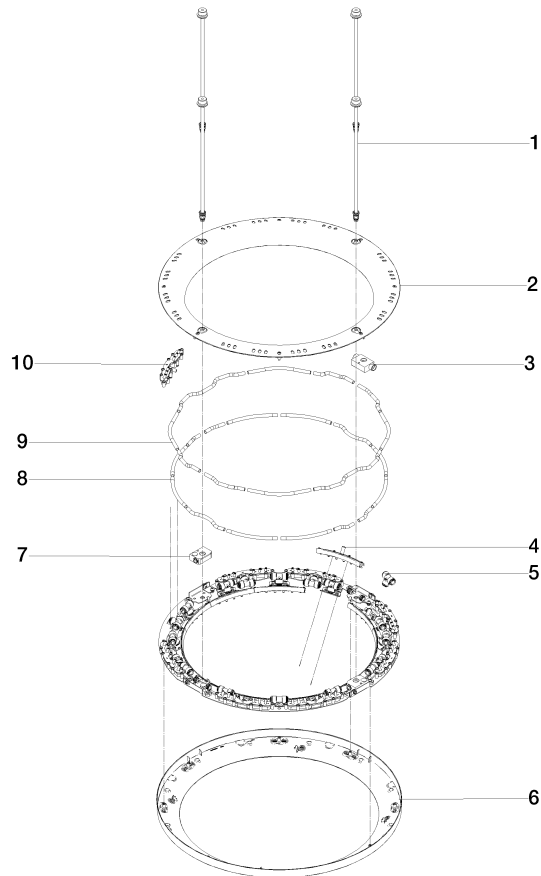
WaterSense



Certificates and sustainability

IAPMO_11777

IAPMO_4976 (



Spare parts list

| Number | Item Number | Designation | Number of units | Lead time |
|--------|--------------------|-----------------------|-----------------|-----------|
| 1 | 90 28 22 605 01-00 | distributor | 4.00 | 10 |
| 2 | 90 12 05 087 00-00 | casing | 1.00 | 10 |
| 4 | 90 17 09 060 02 90 | jet module AQUACIRCLE | 12.00 | 2 |
| 5 | 90 24 04 384 00 90 | adaptor | 20.00 | 2 |
| 7 | 90 24 03 535 00 90 | distributor | 2.00 | 2 |
| 10 | 90 17 09 061 01 90 | jet module TEMPEST | 8.00 | 2 |
| 8 | 90 30 03 118 00 90 | hose | 1.00 | 2 |
| 6 | 90 12 05 088 00-00 | casing | 1.00 | 10 |
| 9 | 90 30 03 117 00 90 | hose | 1.00 | 2 |
| 3 | 90 24 03 535 01 90 | distributor | 2.00 | 2 |