



- Trim parts
- Rain panel with 3 different spray types
- AQUACIRCLE RAIN: Circular rain curtain, flow rate max. 1.8 gpm (at 3 bar)
- TEMPEST RAIN: Natural rain, flow rate max. 1.8 gpm (at 3 bar)
- DIAMOND RAIN: Rain ring, flow rate max. 1.8 gpm (at 3 bar)

Technical data:

- Outer diameter: 23-7/8", diameter of opening: 18-1/4"
- Weight: 13 lbs

Electric:

Separate LED Power supply

- 350mA (CC)

Input LED Power supply

- 350mA (CC)
- Input 100-240V AC 50-60Hz
- Technology: LED, not dimmable

Spot lighting

Output LED Power supply

Output Specification LED Power supply

- IP67
- SELV (Safety Extra Low Voltage)
- Class 2

Ceiling module power supply

- Connecting cable 27-1/2"
- LED color temperature: approx. 3000 K
- Lights protected against splashing
- Light switch not included

Environment

Planning tips:






- Not suitable for outdoor use.
- Not suitable for use in a steam room.
- Not suitable for use in chlorinated or salty environments.
- Observe the regulations concerning protected zones specified in DIN VDE 0100, Part 701 (IEC 60364-7-701).

Notes:

- Recommended control unit: xTool
- Includes lights rated at energy efficiency class

To meet the North American plumbing standards, this application must be installed with a diverter (35 203 970-900010, 3-way diverter rough included and required for more restricted states).

Pre-assembly kit for three-way diverter included

	Chrome	41 750 979-00 0010
	Brushed Platinum	41 750 979-06 0010
	Matte Black	41 750 979-33 0010
	Brushed Champagne (22kt Gold)	41 750 979-46 0010
	Champagne (22kt Gold)	41 750 979-47 0010




SERIES-VARIOUS AQUAHALO Rain panel - Chrome

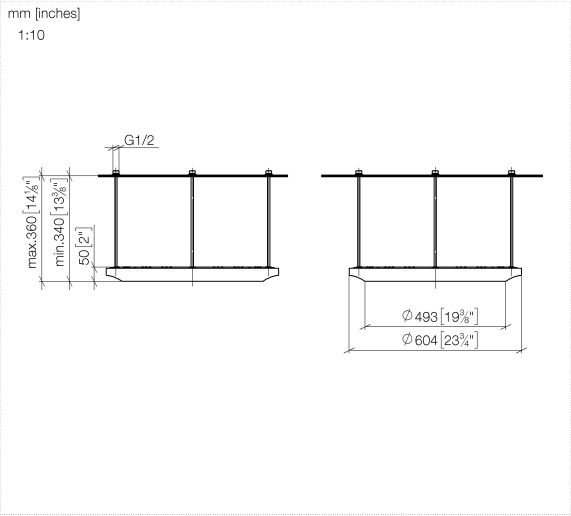
SERIES-VARIOUS

41 750 979 Product version from 4/1/2024

Required article

	SERIES-VARIOUS AQUAHALO	35 750 970-00
	Installation rough - Chrome	0010
<ul style="list-style-type: none">• Rough parts• Pre-assembly kit for three-way diverter included• Ceiling installation housing 23-7/8" x 23-7/8" x 3-3/4"• Weight: 22 lbs• Min. rough in depth 4-3/8"		

41 750 979 Product version from 4/1/2024



Codes & Standards

ASME A112.18.1

cUPC

EPA WaterSense

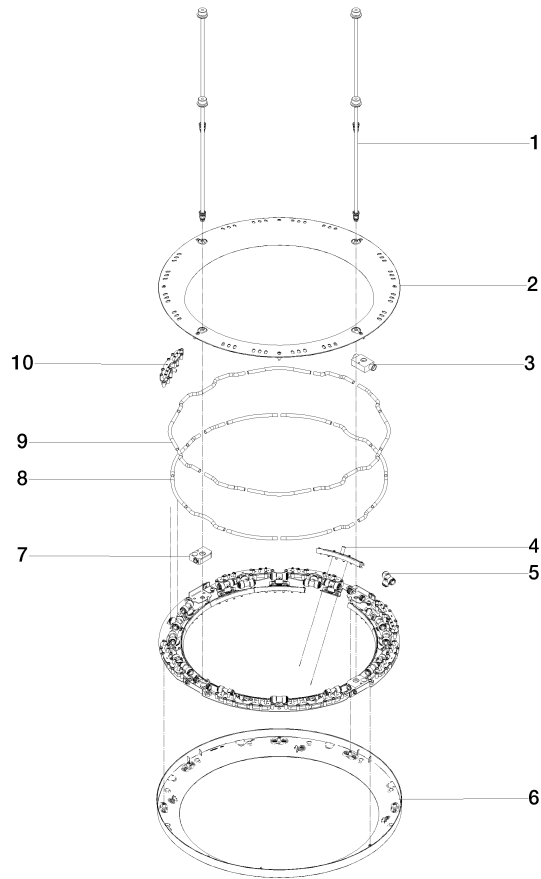
WaterSense



Certificates and sustainability

IAPMO_11777

IAPMO_4976 (



Spare parts list

Number	Item Number	Designation	Number of units	Lead time
1	90 28 22 605 01-00	distributor	4.00	10
2	90 12 05 087 00-00	casing	1.00	10
4	90 17 09 060 02 90	jet module AQUACIRCLE	12.00	2
5	90 24 04 384 00 90	adaptor	20.00	2
7	90 24 03 535 00 90	distributor	2.00	2
10	90 17 09 061 01 90	jet module TEMPEST	8.00	2
8	90 30 03 118 00 90	hose	1.00	2
6	90 12 05 088 00-00	casing	1.00	10
9	90 30 03 117 00 90	hose	1.00	2
3	90 24 03 535 01 90	distributor	2.00	2