

42 766 970 90 Product version from 3/12/2018 to 4/29/2019



- Automatic cleaning feature
- Thermal disinfection
- Adjustable shut-off time
- Self-calibrating high-frequency sensors
- Solenoid valve
- Plug-in power supply, 100-240 VAC / 12 V DC, 50-60 Hz, 18 W, incl. country-specific adaptor set

Not compatible with sinks made of conductive materials such as steel.

Use with top-mounted basins is excluded.

Do not use in combination with closable drains

ATTENTION: Separate terms and conditions for electronic articles are applicable.

Recommended article

Extension For Touchfree 500 mm - 12 765 970 90

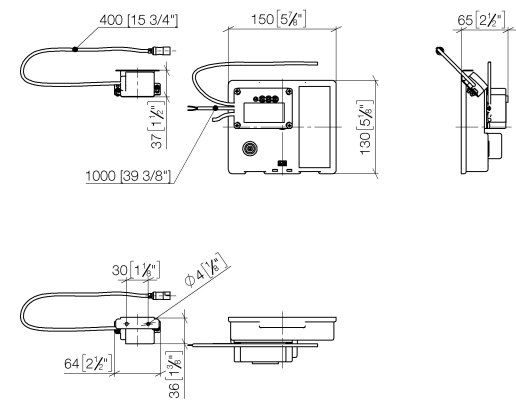


eSET Touchfree Lavatory faucet without temperature adjustment -

SERIES-VARIOUS

42 766 970 90 Product version from 3/12/2018 to 4/29/2019

mm [inches]



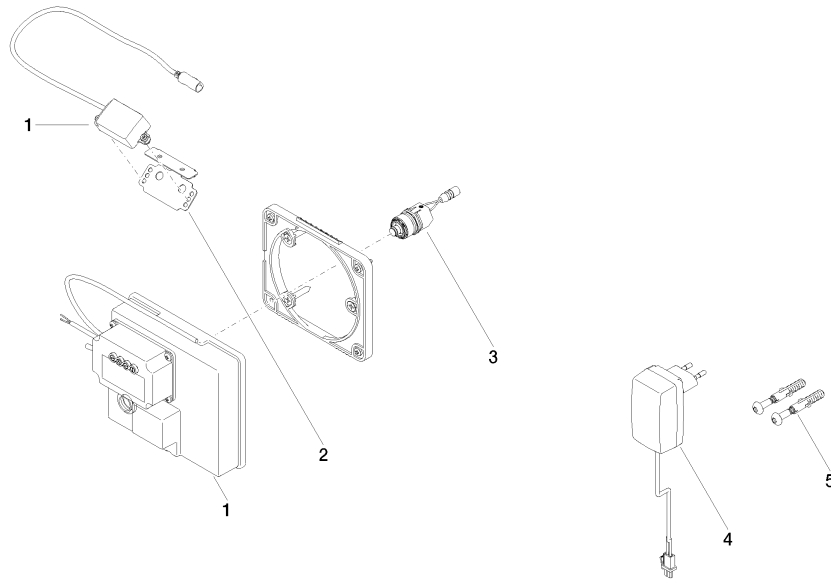
Codes & Standards

CSA C22.2 No. 14	CSA C22.2 No. 68	DIN 4109	ISO 3822
UL 1951	Ü-Zeichen		

Certificates and sustainability

LGA_29	IAPMO_	CE000001_eSet_Tou chfree_20171206_D E_sig	CE000002_eSet_Tou chfree_20171206_E N_sig	LGA_29
--------	--------	---	---	--------

42 766 970 90 Product version from 3/12/2018 to 4/29/2019



Spare parts list

Number	Item Number	Designation	Number of units	Lead time
3	04 30 50 079 00 90	valve	1.00	2
4	04 10 01 050 00 90	power supply	1.00	60
5	04 30 31 024 01 90	fixing set	1.00	2
1	90 10 01 177 00 90	electronic accessories	1.00	2
2	90 17 20 199 00 90	holder	1.00	2