

META Lavatory Touchfree Faucet without drain - Brushed Platinum

META

44 515 660 Product version from 7/1/2023



- Infrared sensor technology
- 4-7/8" Projection
- Total height 5-1/2"
- Height to aerator/spout outlet 2"
- 1-3/8" hole diameter
- Rigid spout
- Water flow rate limited to max. 0.5 gpm
- Laminar stream
- Thermal disinfection
- Automatic shut-off after 30 seconds
- Direct temperature control at faucet
- Battery-powered (batteries not included)
- 1x CR-P2 battery required
- lead-free
- 2 x pressure hose with 3/8" compression fitting
- This product can help a building meet the requirements of Green Building Rating Systems, e.g. LEED®, BREEAM®, DGNB

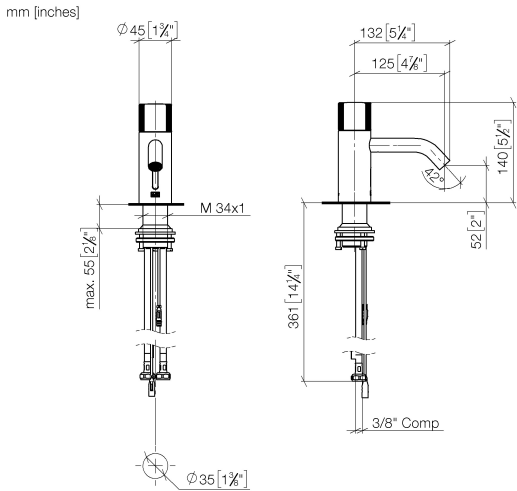
Batteries not included

NOTE: A tempering device is recommended for installation in public areas. Please refer to your local building codes.

| | | |
|---|-------------------------------|--------------------|
|  | Brushed Platinum | 44 515 660-06 0010 |
|  | Chrome | 44 515 660-00 0010 |
|  | Platinum | 44 515 660-08 0010 |
|  | Dark Chrome | 44 515 660-19 0010 |
|  | Light gold | 44 515 660-26 0010 |
|  | Brushed Light Gold | 44 515 660-27 0010 |
|  | Matte Black | 44 515 660-33 0010 |
|  | Brushed Dark Brass | 44 515 660-39 0010 |
|  | Brushed Bronze | 44 515 660-42 0010 |
|  | Brushed Champagne (22kt Gold) | 44 515 660-46 0010 |
|  | Champagne (22kt Gold) | 44 515 660-47 0010 |
|  | Brushed Chrome | 44 515 660-93 0010 |
|  | Brushed Dark Platinum | 44 515 660-99 0010 |

44 515 660

Product version from 7/1/2023

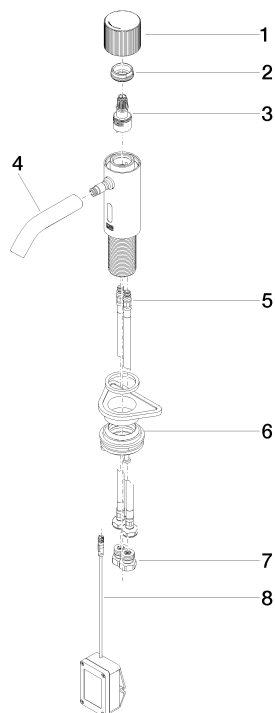


| Codes & Standards | | | |
|-------------------|------------------------------------|------|--------|
| ASME A112.18.1 | California Energy Commission (CEC) | cUPC | NSF372 |

| Certificates and sustainability | |
|---------------------------------|--------------|
| IAPMO_6397 | IAPMO_4976 (|

44 515 660 Product version from 7/1/2023

Parts for other
finishes can be found
here: [Chrome](#)



Spare parts list

| Number | Item Number | Designation | Number of units | Lead time |
|--------|--------------------|-----------------------|-----------------|-----------|
| 8 | 90 10 01 250 00 90 | casingwithout battery | 1.00 | 2 |
| 1 | 90 20 66 124 00-06 | handle | 1.00 | 10 |
| 7 | 90 24 03 314 10 90 | nipple set | 2.00 | 2 |
| 3 | 90 90 03 173 00 90 | top | 1.00 | 2 |
| 5 | 04 30 04 100 00 90 | hose | 2.00 | 2 |
| 6 | 04 23 10 044 08 90 | fixing set | 1.00 | 2 |
| 2 | 09 24 04 562 90 | nut | 1.00 | 60 |
| 4 | 90 11 06 206 02-06 | spout | 1.00 | 10 |