




- Infrared sensor technology
- 5-1/8" Projection
- Total height 5-3/8"
- Height to aerator/spout outlet 2-7/8"
- 1-3/8" hole diameter
- Rigid spout
- Water flow rate limited to max. 1.2 gpm
- Laminar stream
- Thermal disinfection
- Automatic shut-off after 30 seconds
- Direct temperature control at faucet
- Battery-powered (batteries not included)
- 1x CR-P2 battery required
- lead-free
- 2 x pressure hose with 3/8" compression fitting
- This product can help a building meet the requirements of Green Building Rating Systems, e.g. LEED®, BREEAM®, DGNB

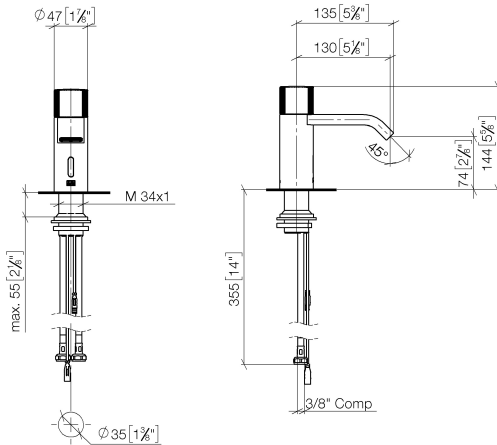
Batteries not included

NOTE: A tempering device is recommended for installation in public areas. Please refer to your local building codes.

	Matte Black	44 515 670-33 0010
	Chrome	44 515 670-00 0010
	Brushed Platinum	44 515 670-06 0010
	Platinum	44 515 670-08 0010
	Brushed Light Gold	44 515 670-27 0010
	Brushed Durabronze (23kt Gold)	44 515 670-28 0010
	Brushed Chrome	44 515 670-93 0010
	Brushed Dark Platinum	44 515 670-99 0010

44 515 670 Product version from 6/1/2024

mm [inches]



Codes & Standards

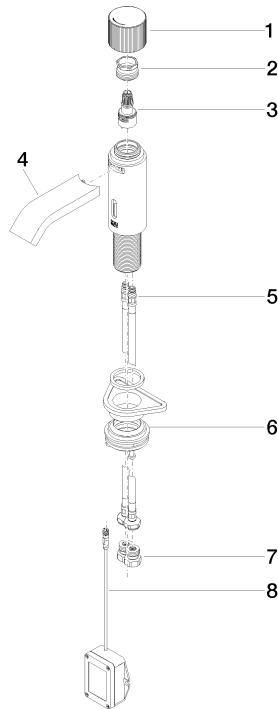
ASME A112.18.1	California Energy Commission (CEC)	cUPC	NSF372
----------------	--	------	--------

Certificates and sustainability

IAPMO\_6397 IAPMO\_4976 (

44 515 670 Product version from 6/1/2024

Parts for other  
finishes can be found  
here: [Chrome](#)



## Spare parts list

Number	Item Number	Designation	Number of units	Lead time
8	90 10 01 250 00 90	casingwithout battery	1.00	2
6	04 23 10 044 08 90	fixing set	1.00	2
3	90 90 03 173 00 90	top	1.00	2
1	90 20 66 122 00-33	handle	1.00	30
7	90 24 03 314 10 90	nipple set	2.00	2
2	09 24 04 565 90	nut	1.00	60
5	04 30 04 100 00 90	hose	2.00	2
4	90 28 22 239 01-33	spout	1.00	30