





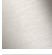



MADISON Towel bar - Platinum

MADISON

83 030 361 Product version from 7/3/2016



- Center to center 11-3/4"
- Width 14-1/8"
- Height 2-3/8"
- Flange diameter 2-3/8"
- 3-1/2" Projection

	Platinum	83 030 361-08
	Chrome	83 030 361-00
	Brushed Platinum	83 030 361-06
	Durabrand (23kt Gold)	83 030 361-09
	Brushed Durabrand (23kt Gold)	83 030 361-28
	Brushed Dark Platinum	83 030 361-99

Recommended article

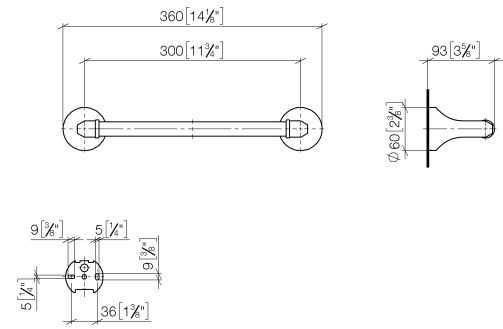


MADISON Mounting bracket for two-sided glass attachment - 12 358 970 90

- For use with two towel bars, back to back. (Requires two brackets)

83 030 361 Product version from 7/3/2016

mm [inches]





Spare parts list

Number	Item Number	Designation	Number of units	Lead time
1	05 17 97 507 00 90	fixing set	2.00	2
2	04 31 11 140 00 90	pin	2.00	2