

Hook - Brushed Platinum

TARA

83 251 892



- Width 2-3/4"
- Flange diameter 2-1/8"
- 2-1/2" Projection

Fits TARA

	Brushed Platinum	83 251 892-06
	Chrome	83 251 892-00
	Platinum	83 251 892-08
	Durabress (23kt Gold)	83 251 892-09
	Dark Chrome	83 251 892-19
	Brushed Light Gold	83 251 892-27
	Brushed Durabress (23kt Gold)	83 251 892-28
	Matte Black	83 251 892-33
	Brushed Bronze	83 251 892-42
	Brushed Champagne (22kt Gold)	83 251 892-46
	Champagne (22kt Gold)	83 251 892-47
	Brushed Chrome	83 251 892-93
	Brushed Dark Platinum	83 251 892-99

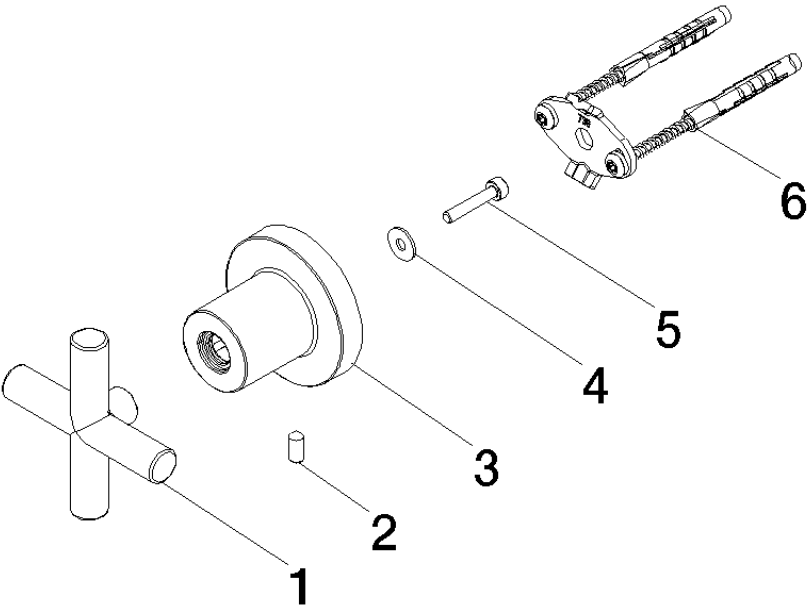
83 251 892

mm [inches]



83 251 892

Parts for other
finishes can be found
here: [Chrome](#)



Spare parts list

Number	Item Number	Designation	Number of units	Lead time
6	05 17 20 739 00 90	fixing set	1.00	2
5	09 30 30 182 90	screw	1.00	2
1	90 20 89 010 10-06	handle	1.00	10
3	08 17 89 505-06	holder	1.00	10
2	04 31 11 113 00 90	pin	1.00	2
4	09 30 11 040 90	disc	1.00	2