


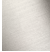






MADISON Tissue holder without cover - Chrome

83 500 361 Product version from 7/3/2016



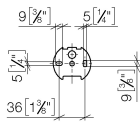
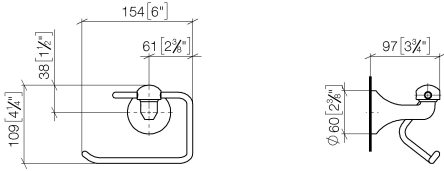
- Width 5-3/4"
- Height 4-3/4"
- 3-3/4" Projection

	Chrome	83 500 361-00
	Brushed Platinum	83 500 361-06
	Platinum	83 500 361-08
	Durabress (23kt Gold)	83 500 361-09
	Brushed Durabress (23kt Gold)	83 500 361-28
	Brushed Dark Platinum	83 500 361-99

MADISON Tissue holder without cover - Chrome

83 500 361 Product version from 7/3/2016

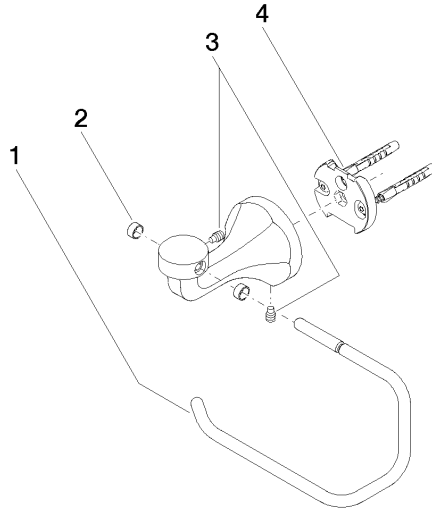
mm [inches]



MADISON Tissue holder without cover - Chrome

83 500 361 Product version from 7/3/2016

Parts for other finishes can be found here: Brushed Platinum



Spare parts list

Number	Item Number	Designation	Number of units	Lead time
1	08 18 70 501-00	bow	1	10
2	08 18 40 505 90	sleeve	2	2
3	04 31 11 140 00 90	pin	2	2
4	05 17 97 507 00 90	fixing set	1	2