
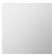



83 500 626

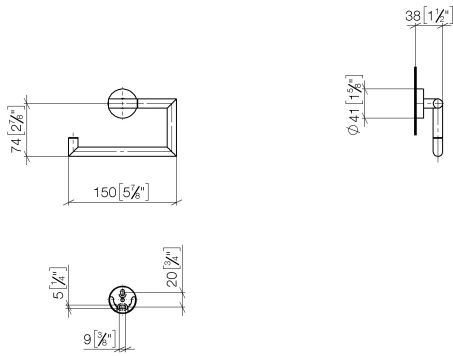


- Width 5-7/8"
- Height 3-3/4"
- Flange diameter 1-5/8"
- 1-1/2" Projection

| | | |
|---|----------------|---------------|
|  | Brushed Chrome | 83 500 626-93 |
|  | Chrome | 83 500 626-00 |
|  | Matte Black | 83 500 626-33 |

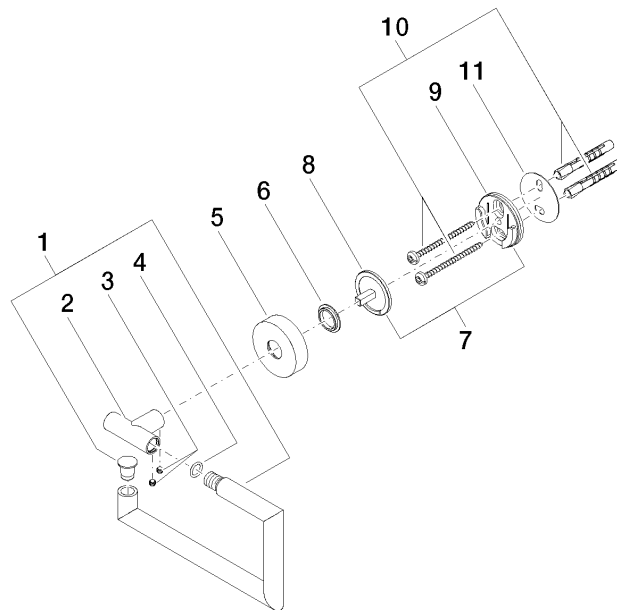
83 500 626

mm [inches]



83 500 626

Parts for other
finishes can be found
here: [Chrome](#)



Spare parts list

| Number | Item Number | Designation | Number of units | Lead time |
|--------|--------------------|-------------|-----------------|-----------|
| 6 | 08 30 11 516 90 | ring | 1.00 | 2 |
| 2 | 05 17 97 561 01-93 | holder | 1.00 | 20 |
| 8 | 08 17 97 559 90 | holder | 1.00 | 2 |
| 9 | 08 17 97 501 07 | holder | 1.00 | 2 |
| 11 | 05 30 11 519 00 90 | disc | 1.00 | 2 |
| 1 | 90 28 22 626 00-93 | holder | 1.00 | 20 |
| 10 | 05 30 31 025 00 90 | fixing set | 1.00 | 2 |
| 5 | 08 27 97 500-93 | rosette | 1.00 | 20 |
| 7 | 05 17 97 501 01 90 | holder | 1.00 | 2 |
| 4 | 90 14 10 060 00 90 | seal | 1.00 | 2 |
| 3 | 90 31 11 038 00 90 | pin | 1.00 | 2 |