









## CL.1 Tissue holder without cover - Brushed Platinum

---

83 500 705 Product version from 3/9/2015

- Width 7-7/8"
- Height 1-3/8"
- 2-3/4" Projection



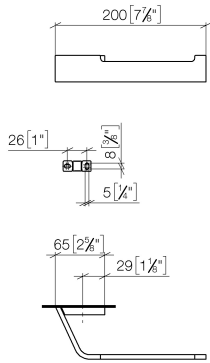
	Brushed Platinum	83 500 705-06
	Chrome	83 500 705-00
	Dark Chrome	83 500 705-19
	Brushed Champagne (22kt Gold)	83 500 705-46
	Champagne (22kt Gold)	83 500 705-47
	Brushed Dark Platinum	83 500 705-99

## CL.1 Tissue holder without cover - Brushed Platinum

---

83 500 705 Product version from 3/9/2015

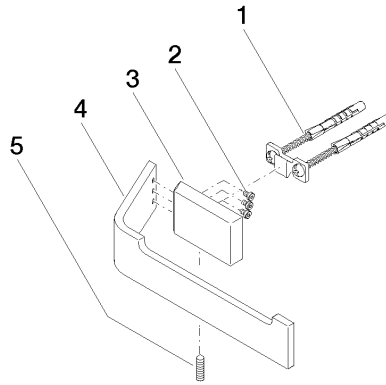
mm [inches]



## CL.1 Tissue holder without cover - Brushed Platinum

83 500 705 Product version from 3/9/2015

Parts for other finishes can be found here: [Chrome](#)



### Spare parts list

Number	Item Number	Designation	Number of units	Lead time
1	05 17 20 758 00 90	fixing set	1	2
2	09 30 30 191 90	screw	3	2
3	08 17 70 500-06	holder	1	10
4	08 17 70 553-06	holder	1	10
5	04 31 11 113 00 90	pin	1	2