

## WATER FALL Cascade spout with individual jets for wall mounting - Light Gold

IMO

13 425 979



- 22mm projection
- PEARLSTREAM
- plate 240 mm x 60 mm
- connection 1/2", for shortening
- plug-link mounting
- Max. flow rate 9.5 l/min (at 3 bar)

Fits: IMO, LULU, MADISON, MEM, TARA,  
CL.1, LISSÉ, VAIA, META, CYO

|  |                                     |               |
|--|-------------------------------------|---------------|
|    | Light Gold                          | 13 425 979-26 |
|    | Chrome                              | 13 425 979-00 |
|    | Brushed Platinum                    | 13 425 979-06 |
|    | Platinum                            | 13 425 979-08 |
|    | Dark Chrome                         | 13 425 979-19 |
|    | Brushed Light Gold                  | 13 425 979-27 |
|    | Brushed Durabronze<br>(23kt Gold)   | 13 425 979-28 |
|    | Matte Black                         | 13 425 979-33 |
|    | Brushed Bronze                      | 13 425 979-42 |
|   | Brushed<br>Champagne (22kt<br>Gold) | 13 425 979-46 |
|  | Champagne (22kt<br>Gold)            | 13 425 979-47 |
|  | Brushed Chrome                      | 13 425 979-93 |
|  | Brushed Dark<br>Platinum            | 13 425 979-99 |

### Required miscellaneous

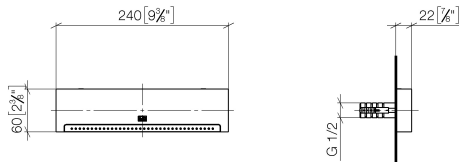
**Concealed adapter -**

35 080 970-90  
0010

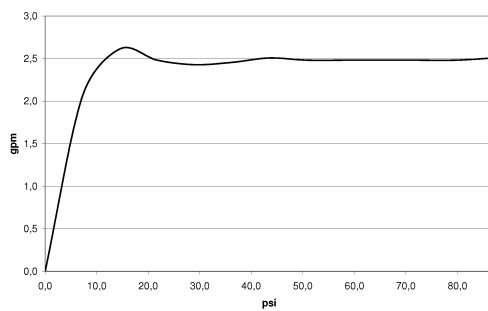


13 425 979

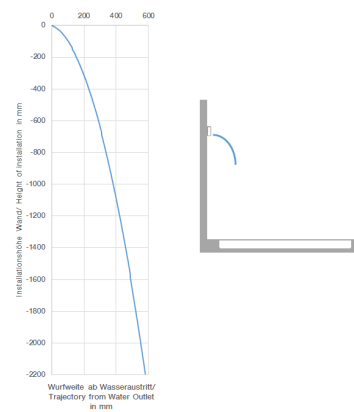
mm [inches]



Flow rate chart



Trajectory diagram



Codes & Standards

ASME  
A112.18.1/CSA  
B125.1

DIN 4109

ISO 3822

Ü-Zeichen



## WATER FALL Cascade spout with individual jets for wall mounting - Light Gold

---

IMO

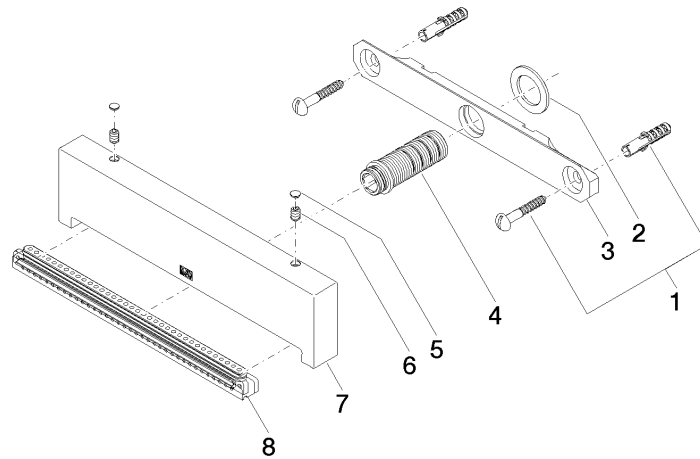
13 425 979

### Certificates

---

LGA\_19

**Product version from 10/1/2023**





## WATER FALL Cascade spout with individual jets for wall mounting - Light Gold

IMO

13 425 979

### Spare parts list

Product version from 10/1/2023

| No. | Item Number        | Name       | Quantity used | Delivery time |
|-----|--------------------|------------|---------------|---------------|
|     | 04 30 31 024 01 90 | fixing set | 9             | 2             |