

## WATER SHEET Cascade spout for wall mounting - Platinum

IMO

13 445 979



- 150mm projection
- cascade
- cover plate 240 x 60 mm
- 1/2" connection
- plug-link mounting
- max. flow 9.5 l/min at 3 bar flow pressure
- This product can help a building meet the requirements of Green Building Rating Systems, e.g. LEED®, BREEAM®, DGNB

Fits: IMO, LULU, MADISON, MEM, TARA, CL.1, LISSÉ, VAIA, META, CYO

### Required miscellaneous

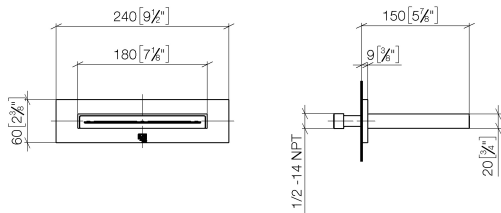
**Concealed adapter -**

35 080 970-90  
0010

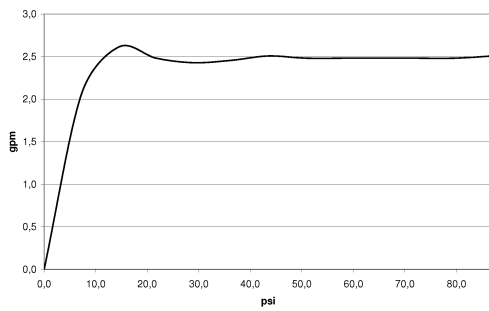


13 445 979

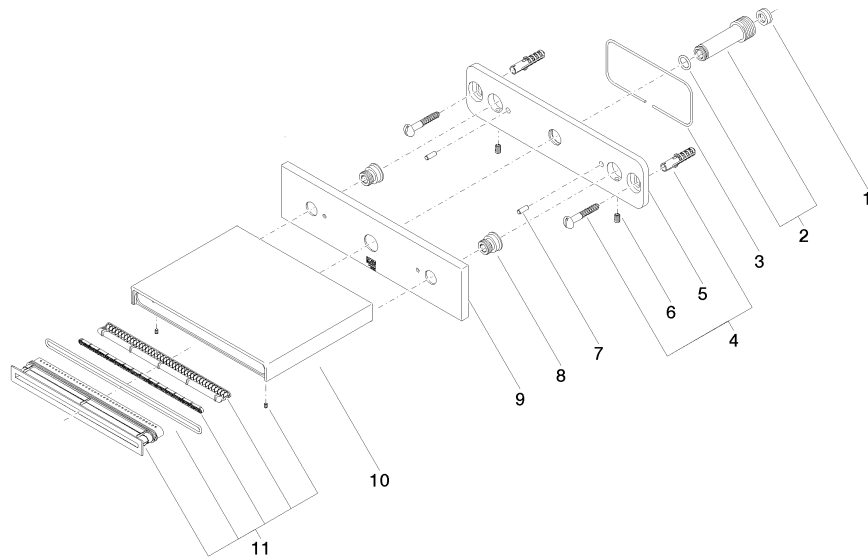
mm [inches]



Flow rate chart



13 445 979



## Spare parts list

No.	Item Number	Name	Quantity used	Delivery time
1	09 23 01 134 90	flow reducer	1	2
2	90 24 03 213 00 90	connection	1	2
3	09 14 03 134 90	seal	1	2
4	04 30 31 024 01 90	fixing set	1	2
5	09 17 97 059 90	holder	1	2
6	09 31 11 036 90	pin	2	2
7	09 31 11 040 90	pin	2	2
8	09 24 03 214 90	nipple	2	2
9	09 27 78 051-08	rosette	1	60
10	09 11 78 003 20-08	spout	1	40
11	90 29 03 059 00 90	insert	1	2