

WATER SHEET Cascade spout for wall mounting - Brushed Chrome

IMO

13 445 979



- 150mm projection
- cascade
- cover plate 240 x 60 mm
- 1/2" connection
- plug-link mounting
- max. flow 9.5 l/min at 3 bar flow pressure
- This product can help a building meet the requirements of Green Building Rating Systems, e.g. LEED®, BREEAM®, DGNB

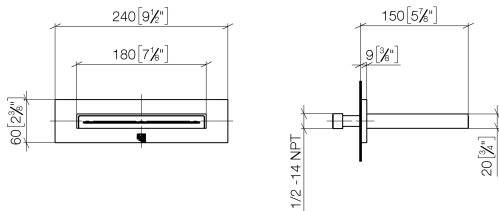
Fits: IMO, LULU, MADISON, MEM, TARA,
CL.1, LISSÉ, VAIA, META, CYO

WATER SHEET Cascade spout for wall mounting - Brushed Chrome

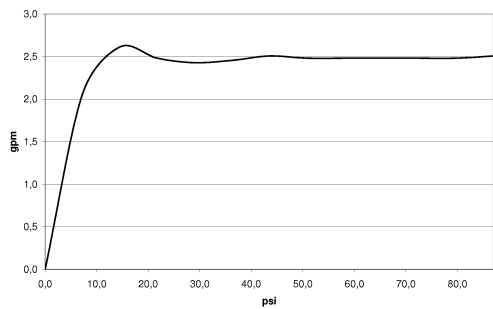
IMO

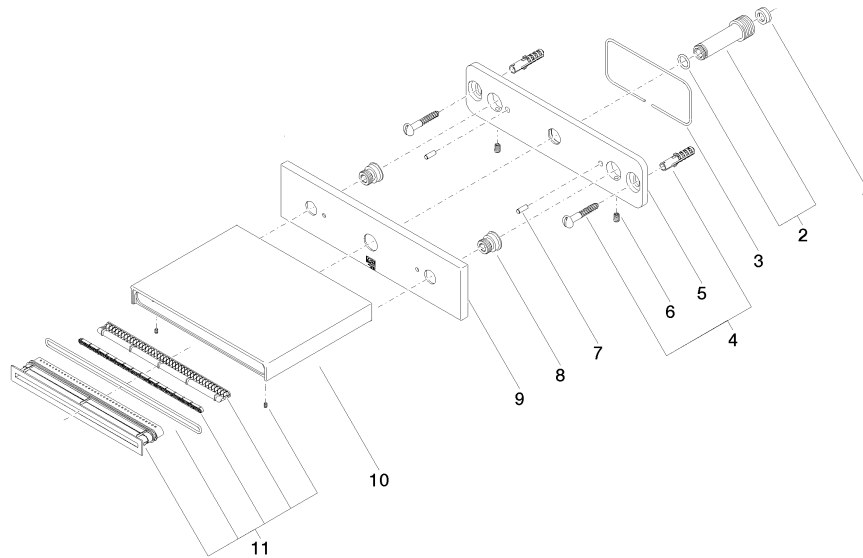
13 445 979

mm [inches]



Flow rate chart







WATER SHEET Cascade spout for wall mounting - Brushed Chrome

IMO

13 445 979

Spare parts list

No.	Item Number	Name	Quantity used	Delivery time
	09 23 01 134 90	flow reducer	14	2