








## MEM Bath spout without diverter for free-standing assembly - Platinum

MEM

13 672 780



- 280mm projection
- cascade
- total height 830 - 900 mm
- height up to aerator 665 – 735 mm
- push-on rosette 130 x 130 mm
- max. flow 47.8 l/min at 3 bar flow pressure
- WRAS 2005008

|                                                                                    |                                |               |
|------------------------------------------------------------------------------------|--------------------------------|---------------|
|  | Platinum                       | 13 672 780-08 |
|  | Chrome                         | 13 672 780-00 |
|  | Brushed Platinum               | 13 672 780-06 |
|  | Dark Chrome                    | 13 672 780-19 |
|  | Brushed Durabronze (23kt Gold) | 13 672 780-28 |
|  | Brushed Champagne (22kt Gold)  | 13 672 780-46 |
|  | Champagne (22kt Gold)          | 13 672 780-47 |

### Required miscellaneous



- Concealed floor mounting -**
- max. recess depth 150 mm
  - min. recess depth 80 mm

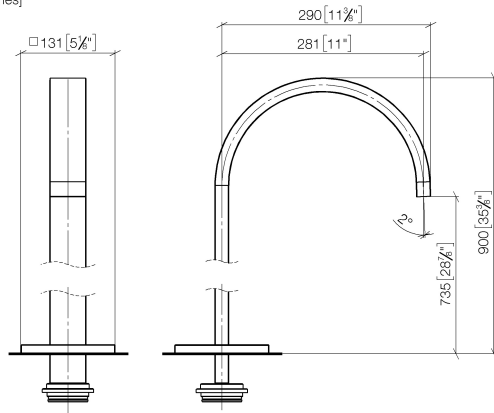
35 949 970-90  
0010

## MEM Bath spout without diverter for free-standing assembly - Platinum

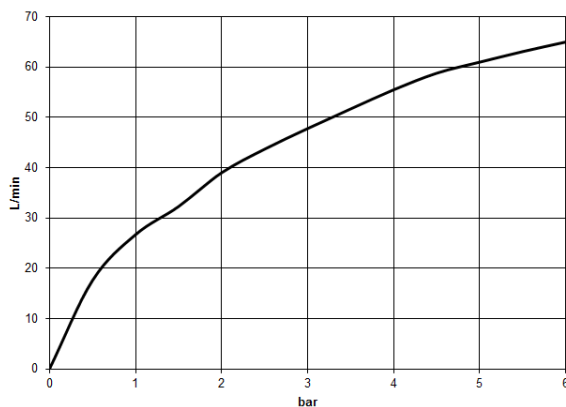
MEM

13 672 780

mm [inches]



### Flow rate chart



### Codes & Standards

|                |                                 |                                |           |
|----------------|---------------------------------|--------------------------------|-----------|
| ASME A112.18.1 | ASME<br>A112.18.1/CSA<br>B125.1 | cUPC                           | DIN 4109  |
| ISO 3822       | Scottish Water<br>Byelaws       | UK Water Supply<br>Regulations | Ü-Zeichen |



## MEM Bath spout without diverter for free-standing assembly - Platinum

---

MEM

13 672 780

### Certificates

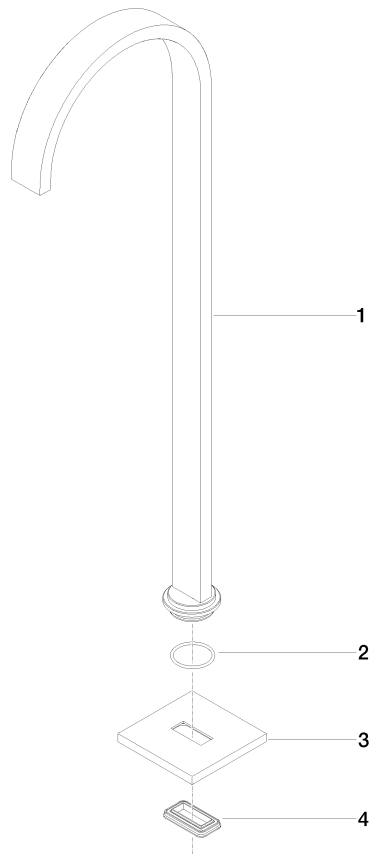
---

WRAS\_2005

LGA\_18

IAPMO\_4976

**Product version from 9/30/2005**





MEM Bath spout without diverter for free-standing assembly - Platinum

MEM

13 672 780

Spare parts list

Product version from 9/30/2005

| No. | Item Number        | Name  | Quantity used | Delivery time |
|-----|--------------------|-------|---------------|---------------|
|     | 04 28 22 183 00-08 | spout | 4             | 60            |