

LISSÉ Deck-mounted basin spout without pop-up waste - Brushed Dark Platinum






LISSÉ

13 700 845



- 130mm projection
- fixed spout
- circular, air-enriched flow
- height of mixer 95 mm
- height up to aerator 75 mm
- hole diameter 35 mm
- 1/2" connection
- max. flow 5.7 l/min
- lead-free
- This product can help a building meet the requirements of Green Building Rating Systems, e.g. LEED®, BREEAM®, DGNB
- WRAS 1909064

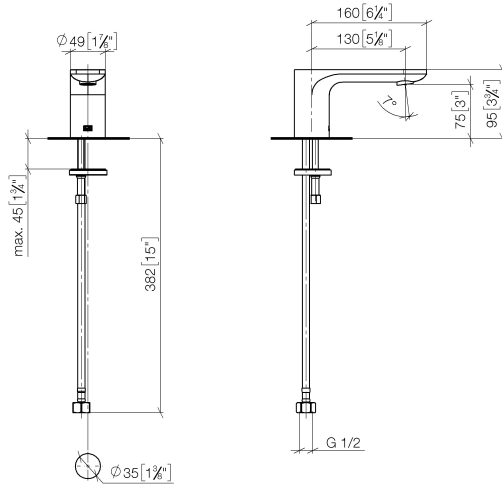
For Touchfree control please order eSet Touchfree
WITH or WITHOUT temperature adjustment

	Brushed Dark Platinum	13 700 845-99
	Chrome	13 700 845-00
	Dark Chrome	13 700 845-19
	Matte Black	13 700 845-33
	Brushed Chrome	13 700 845-93

LISSÉ Deck-mounted basin spout without pop-up waste - Brushed Dark Platinum

LISSÉ

13 700 845
mm [inches]



Flow rate chart



Codes & Standards

ASME A112.18.1/CSA B125.1	DIN 4109	ISO 3822	NSF/ANSI 372
NSF/ANSI/CAN 61	NSF372	NSF61	Ü-Zeichen



LISSÉ Deck-mounted basin spout without pop-up waste - Brushed Dark Platinum

LISSÉ

13 700 845

Certificates

IAPMO_N-4

LGA_29

IAPMO_6

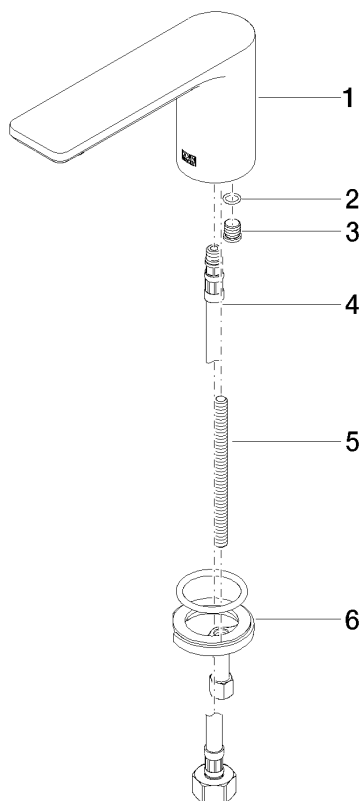
LISSÉ Deck-mounted basin spout without pop-up waste - Brushed Dark Platinum

LISSÉ

13 700 845

Product version from 3/13/2017

Parts for other
finishes can be found
here: [Chrome](#)





LISSE Deck-mounted basin spout without pop-up waste - Brushed Dark
Platinum

LISSE

13 700 845

Spare parts list

Product version from 3/13/2017

No.	Item Number	Name	Quantity used	Delivery time
	90 11 84 015 00-99	spout	6	30