

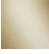





CL.1 Deck-mounted basin spout without pop-up waste - Brushed Champagne (22kt Gold)

CL.1

13 714 705



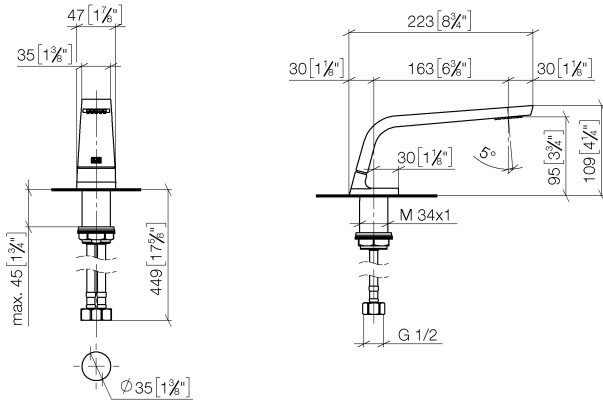
- 160mm projection
- fixed spout
- rectangular spray pattern with 40 individual jets
- height of mixer 108 mm
- height up to aerator 94 mm
- hole diameter 35 mm
- 2x screw-in M 10 x 1 pressure hose, leak-tested
- 1/2" connection
- max. flow 4 l/min
- lead-free
- This product can help a building meet the requirements of Green Building Rating Systems, e.g. LEED®, BREEAM®, DGNB
- WRAS 1512011

	Brushed Champagne (22kt Gold)	13 714 705-46
	Chrome	13 714 705-00
	Brushed Platinum	13 714 705-06
	Dark Chrome	13 714 705-19
	Champagne (22kt Gold)	13 714 705-47
	Brushed Dark Platinum	13 714 705-99

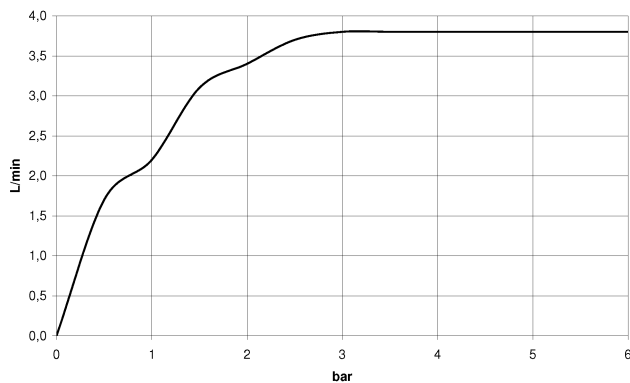
CL.1 Deck-mounted basin spout without pop-up waste - Brushed Champagne (22kt Gold)

CL.1

13 714 705
mm [inches]



Flow rate chart



Codes & Standards

ASME
A112.18.1/CSA
B125.1
NSF/ANSI/CAN
61

California Energy
Commission
(CEC)
NSF372

Executive Order
no. 1007
NSF61

NSF/ANSI 372



CL.1 Deck-mounted basin spout without pop-up waste - Brushed Champagne
(22kt Gold)

CL.1

13 714 705
Certificates

GDV_0400	IAPMO_N-4	IAPMO_6
----------	-----------	---------

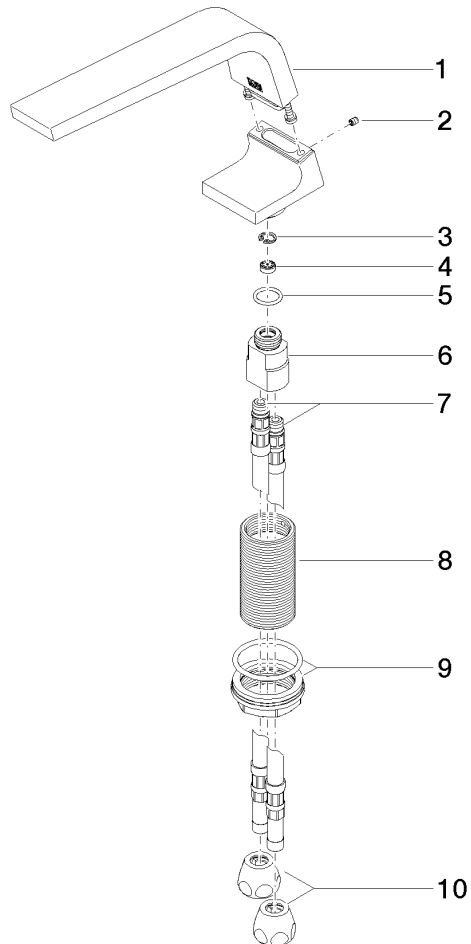
**CL.1 Deck-mounted basin spout without pop-up waste - Brushed Champagne
(22kt Gold)**

CL.1

13 714 705

Product version from 6/15/2021

Parts for other
finishes can be found
here: [Chrome](#)





CL.1 Deck-mounted basin spout without pop-up waste - Brushed Champagne (22kt Gold)

CL.1

13 714 705

Spare parts list

Product version from 6/15/2021