



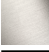

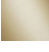

CL.1 Wall-mounted basin spout without pop-up waste - Brushed Dark Platinum

CL.1

13 800 705



- 200mm projection
- fixed spout
- rectangular spray pattern with 40 individual jets
- hole diameter 37 mm
- lead-free
- 1/2" connection
- plug-link mounting
- max. flow 4.5 l/min
- This product can help a building meet the requirements of Green Building Rating Systems, e.g. LEED®, BREEAM®, DGNB
- WRAS 1512013

	Brushed Dark Platinum	13 800 705-99
	Chrome	13 800 705-00
	Brushed Platinum	13 800 705-06
	Dark Chrome	13 800 705-19
	Brushed Champagne (22kt Gold)	13 800 705-46
	Champagne (22kt Gold)	13 800 705-47

Required miscellaneous

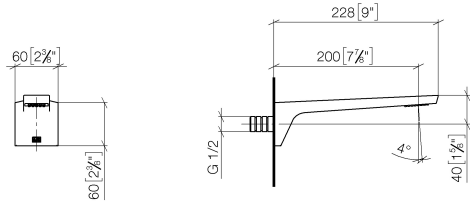
Concealed adapter -

35 080 970-90
0010

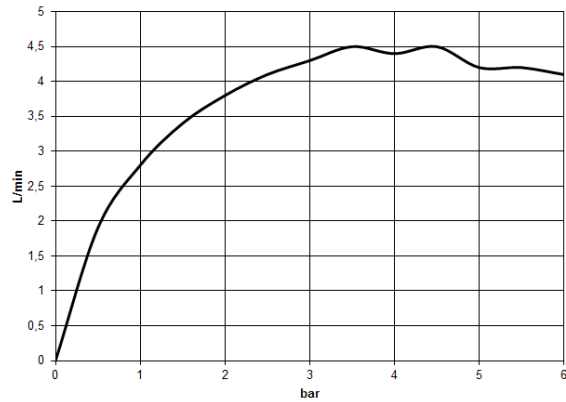


13 800 705


mm [inches]



Flow rate chart



Codes & Standards

ASME A112.18.1	ASME A112.18.1/CSA B125.1	California Energy Commission (CEC)	cUPC
DIN 4109	EPA WaterSense	ISO 3822	NSF/ANSI 372
NSF/ANSI/CAN 61	NSF372	NSF61	Scottish Water Byelaws
UK Water Supply Regulations	Ü-Zeichen	Water Sense	WaterSense 



CL.1 Wall-mounted basin spout without pop-up waste - Brushed Dark Platinum

CL.1

13 800 705

Certificates

IAPMO_4976

IAPMO_N-4

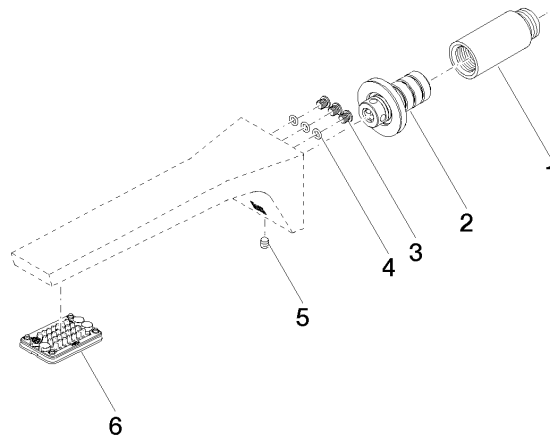
IAPMO_8834

LGA_28

IAPMO_6

WRAS_1512

Product version from 3/9/2015





CL.1 Wall-mounted basin spout without pop-up waste - Brushed Dark Platinum

CL.1

13 800 705

Spare parts list

Product version from 3/9/2015

No.	Item Number	Name	Quantity used	Delivery time
	09 24 03 081 10 90	extension	10	2