

META Bath spout for wall mounting - Matte Black

META

13 801 660



- 200mm projection
- circular normal flow
- rosette Ø 60 mm
- hole diameter 37 mm
- 1/2" connection
- max. flow 24.6 l/min at 3 bar flow pressure
- WRAS 2001010

| | | |
|---|-------------------------------|---------------|
|  | Matte Black | 13 801 660-33 |
|  | Chrome | 13 801 660-00 |
|  | Brushed Platinum | 13 801 660-06 |
|  | Dark Chrome | 13 801 660-19 |
|  | Light Gold | 13 801 660-26 |
|  | Brushed Light Gold | 13 801 660-27 |
|  | Brushed Bronze | 13 801 660-42 |
|  | Brushed Champagne (22kt Gold) | 13 801 660-46 |
|  | Champagne (22kt Gold) | 13 801 660-47 |
|  | Brushed Chrome | 13 801 660-93 |
|  | Brushed Dark Platinum | 13 801 660-99 |

Recommended miscellaneous

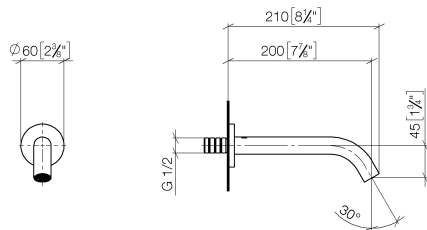
Concealed adapter -

35 080 970-90
0010

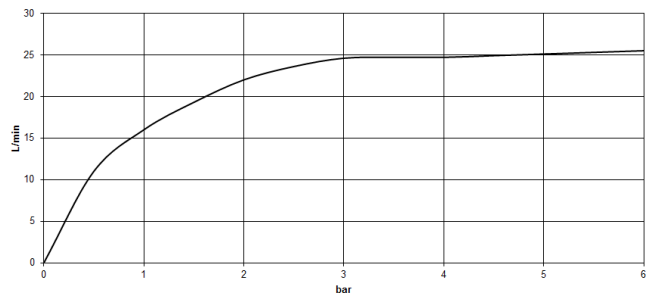


13 801 660

mm [inches]



Flow rate chart



Codes & Standards

| | | | |
|----------------|---------------------------------|--------------------------------|-----------|
| ASME A112.18.1 | ASME A112.18.1/CSA B125.1 | cUPC | DIN 4109 |
| ISO 3822 | Scottish Water Byelaws | UK Water Supply Regulations | Ü-Zeichen |



META Bath spout for wall mounting - Matte Black

META

13 801 660

Certificates

IAPMO_4976

LGA_18

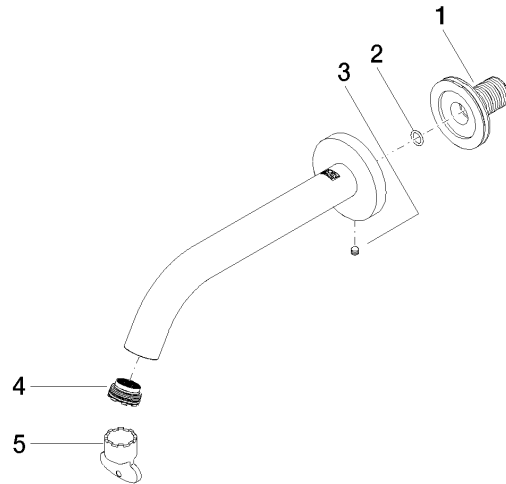
WRAS_2001

13 801 660

Product version up to 5/27/2021

Product version from 5/27/2021 to 5/28/2021

Product version from 5/28/2021





META Bath spout for wall mounting - Matte Black

META

13 801 660

Spare parts list

Product version up to 5/27/2021

Product version from 5/27/2021 to 5/28/2021

Product version from 5/28/2021

| No. | Item Number | Name | Quantity used | Delivery time |
|-----|--------------------|--------|---------------|---------------|
| | 90 24 03 280 00 90 | nipple | 5 | 2 |