

META Bath spout for wall mounting - Brushed Bronze

META

13 801 660



- 200mm projection
- circular normal flow
- rosette Ø 60 mm
- hole diameter 37 mm
- 1/2" connection
- max. flow 24.6 l/min at 3 bar flow pressure
- WRAS 2001010

	Brushed Bronze	13 801 660-42
	Chrome	13 801 660-00
	Brushed Platinum	13 801 660-06
	Dark Chrome	13 801 660-19
	Light Gold	13 801 660-26
	Brushed Light Gold	13 801 660-27
	Matte Black	13 801 660-33
	Brushed Champagne (22kt Gold)	13 801 660-46
	Champagne (22kt Gold)	13 801 660-47
	Brushed Chrome	13 801 660-93
	Brushed Dark Platinum	13 801 660-99

Recommended miscellaneous

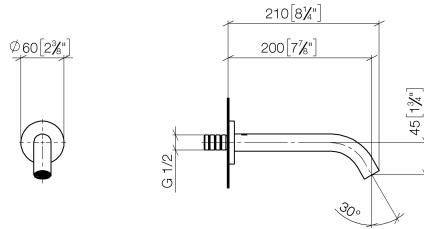
Concealed adapter -

35 080 970-90
0010



13 801 660

mm [inches]



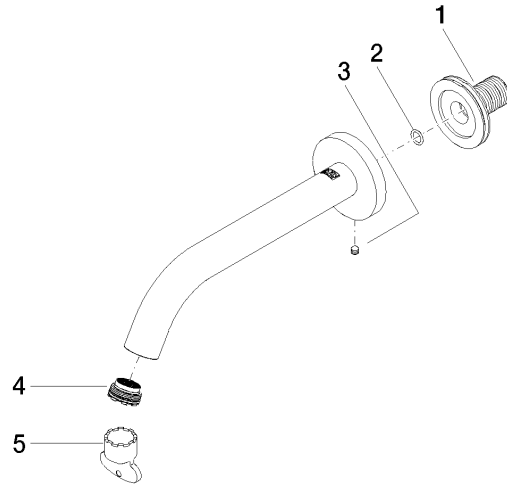
Flow rate chart



Codes & Standards

ASME
A112.18.1/CSA
B125.1

Product version from 5/28/2021





META Bath spout for wall mounting - Brushed Bronze

META

13 801 660

Spare parts list

Product version from 5/28/2021