

META Bath spout for wall mounting - Brushed Chrome

META

13 801 660

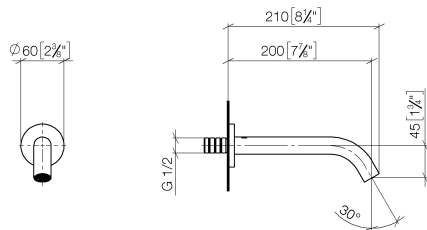


- 200mm projection
- circular normal flow
- rosette Ø 60 mm
- hole diameter 37 mm
- 1/2" connection
- max. flow 24.6 l/min at 3 bar flow pressure
- WRAS 2001010

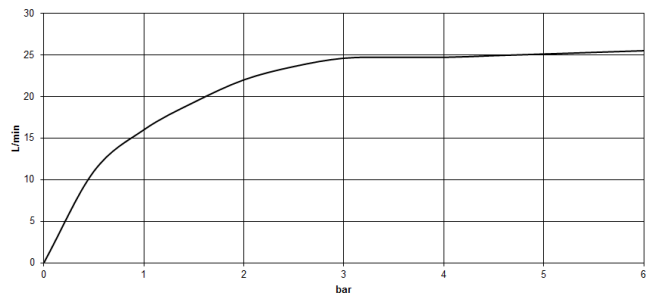
	Brushed Chrome	13 801 660-93
	Chrome	13 801 660-00
	Brushed Platinum	13 801 660-06
	Dark Chrome	13 801 660-19
	Light Gold	13 801 660-26
	Brushed Light Gold	13 801 660-27
	Matte Black	13 801 660-33
	Brushed Bronze	13 801 660-42
	Brushed Champagne (22kt Gold)	13 801 660-46
	Champagne (22kt Gold)	13 801 660-47
	Brushed Dark Platinum	13 801 660-99

13 801 660

mm [inches]



Flow rate chart



Codes & Standards

ASME A112.18.1	ASME A112.18.1/CSA B125.1	cUPC	DIN 4109
ISO 3822	Scottish Water Byelaws	UK Water Supply Regulations	Ü-Zeichen



META Bath spout for wall mounting - Brushed Chrome

META

13 801 660

Certificates

IAPMO_4976

LGA_18

WRAS_2001

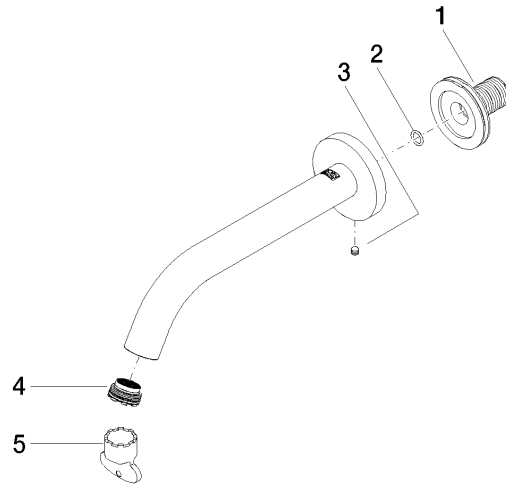
13 801 660

Product version up to 5/27/2021

Product version from 5/27/2021 to 5/28/2021

Product version from 5/28/2021

Parts for other
finishes can be found
here: [Chrome](#)





META Bath spout for wall mounting - Brushed Chrome

META

13 801 660

Spare parts list

Product version up to 5/27/2021

Product version from 5/27/2021 to 5/28/2021

Product version from 5/28/2021

No.	Item Number	Name	Quantity used	Delivery time
	90 24 03 280 00 90	nipple	5	2