







IMO Bath spout for wall mounting - Dark Chrome

IMO

13 801 670



- 200mm projection
- rectangular normal flow
- hole diameter 37 mm
- 1/2" connection
- max. flow 25.1 l/min at 3 bar flow pressure
- WRAS 2005002

	Dark Chrome	13 801 670-19
	Chrome	13 801 670-00
	Brushed Platinum	13 801 670-06
	Brushed Light Gold	13 801 670-27
	Matte Black	13 801 670-33
	Brushed Chrome	13 801 670-93

Required miscellaneous

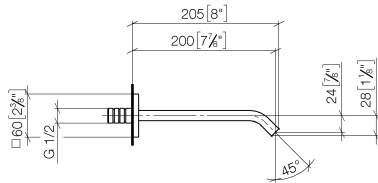
Concealed adapter -

35 080 970-90
0010

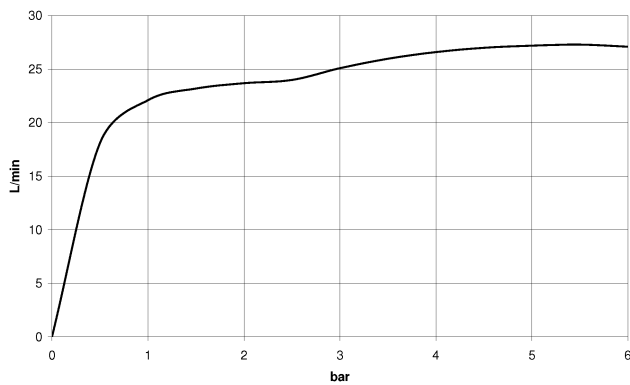


13 801 670

mm [inches]



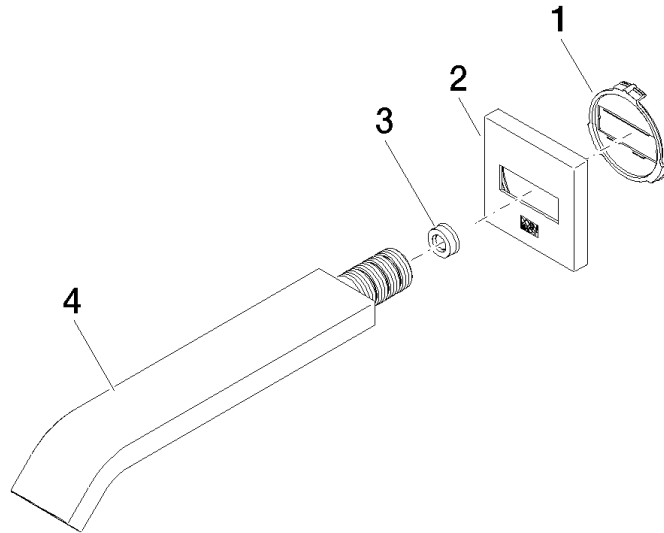
Flow rate chart



Codes & Standards

ASME
A112.18.1/CSA
B125.1

Product version from 4/1/2024





IMO Bath spout for wall mounting - Dark Chrome

IMO

13 801 670

Spare parts list

Product version from 4/1/2024

No.	Item Number	Name	Quantity used	Delivery time
	09 18 40 139 90	base	4	2